

Quickstart guide

EXTREME X10
Action Camera

VIZU

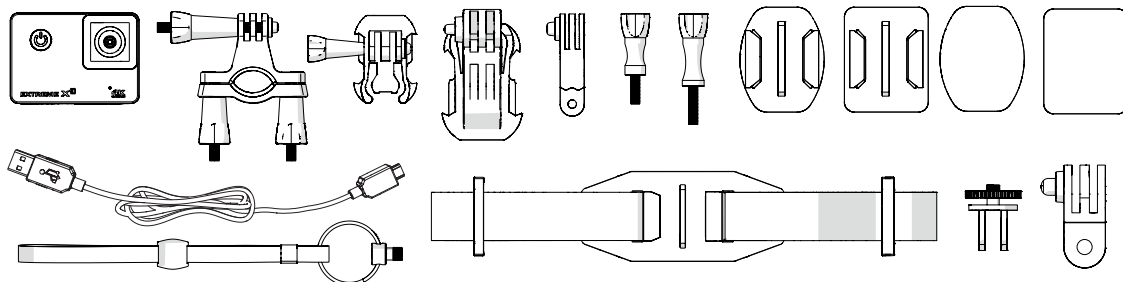


- Ⓔ For more information visit www.govizu.com
- Ⓓ Voor meer informatie zie www.govizu.com
- Ⓓ Für weitere Informationen siehe www.govizu.com
- Ⓕ Pour plus d'informations, voir www.govizu.com
- Ⓔ Para más información, consulte www.govizu.com
- Ⓗ Per ulteriori informazioni consultare www.govizu.com



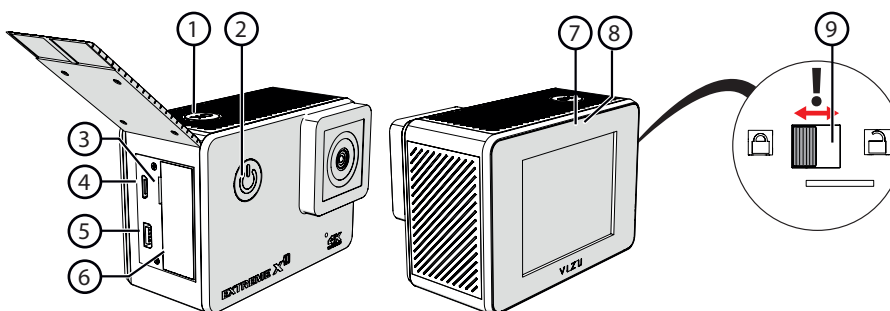
1 Check the contents

Controleer de inhoud
Kontrollieren Sie den Inhalt
Vérifiez le contenu
Revise el contenido
Controllare il contenuto



2 Main parts

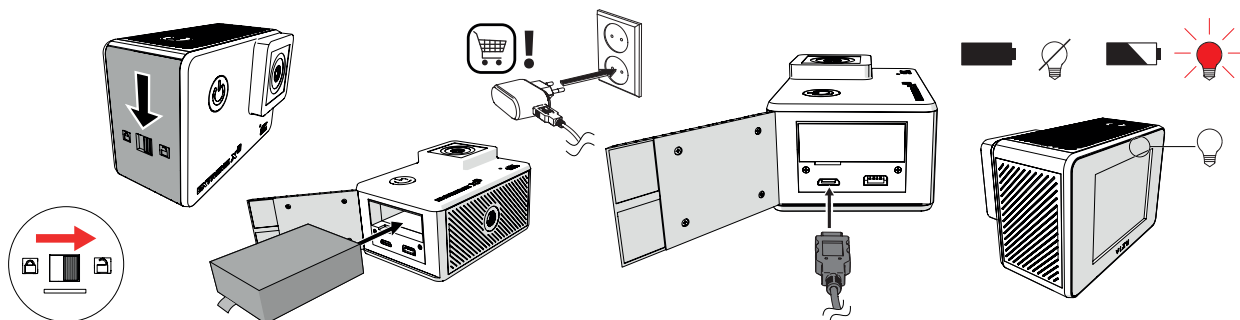
Belangrijkste onderdelen
Hauptkomponenten
Pièces principales
Partes principales
Parti principali



1	OK
2	Mode/power button
3	Micro SD
4	USB
5	HDMI
6	Battery
7	On/off led
8	Charging led
9	Lock lid

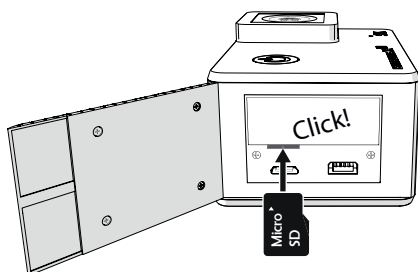
3 Charge the device

Het apparaat laden
Gerät laden
Charger
l'appareil
Cargar el dispositivo
Ricarica del dispositivo



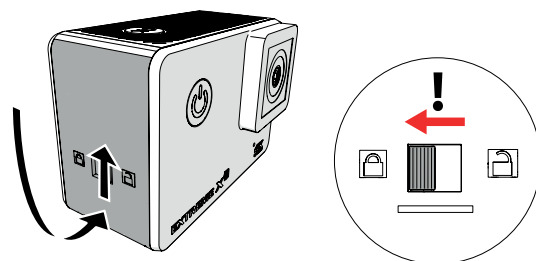
4 Slot-in for micro SD card

Micro SD-kaart ingang
Anschluss für Micro-SD-Karte
Connecteur pour carte micro mémoire flash
Entrada para tarjeta micro SD
Fessura scheda micro SD



5 Close the lid

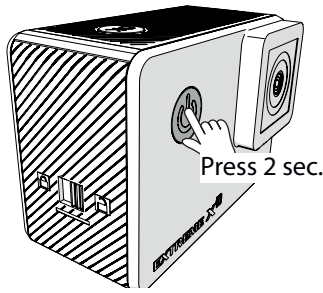
Sluit de deksel
Schließen Sie den Deckel
Fermez le couvercle
Cerrar la tapa
Sempre il coperchio



6

Turn the device on/off

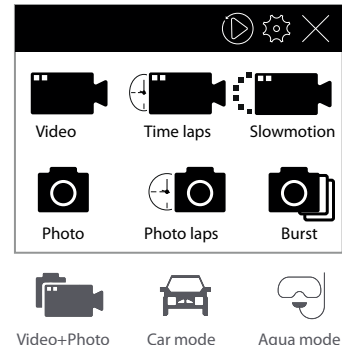
Het apparaat aan en uit zetten
 Das Gerät an- und ausschalten
 Mettre l'appareil en service/hors service
 Encender/apague el aparato
 Accensione/spengimento el dispositivo



7

Functions

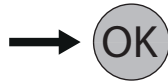
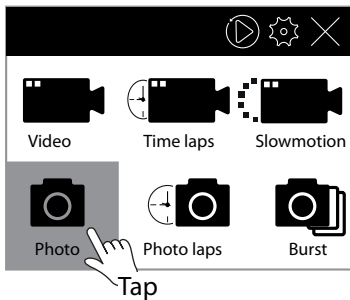
Functies
 Funktionen
 Fonctions
 Funciones
 Funzioni



8

Make a photo

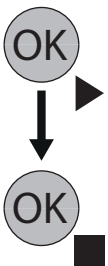
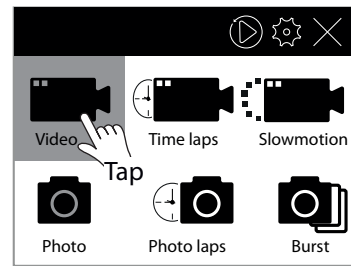
Een foto maken
 Ein Foto machen
 Prendre une photo
 Tomar una fotografia
 Fare una foto



9

Start filming

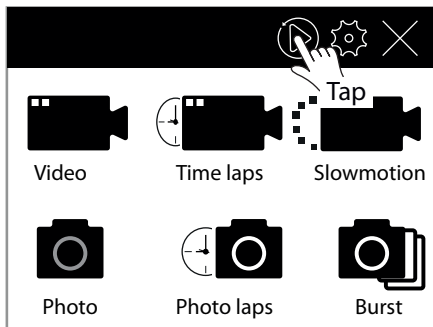
Beginnen met filmen
 Videoaufnahme starten
 Démarrer la vidéo
 Comenzar a grabar
 Iniziare le riprese



10

Play

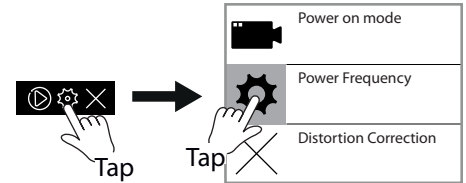
Afspelen
 Wiedergabe
 Lecture
 Reproducir
 Riproduzione



11

Settings

Instellingen
 Einstellungen
 Paramètres
 Ajustes
 Impostazioni



- Power on mode
- Power Frequency
- Distortion Correction
- Date & Time
- Screen Saver
- Auto Power Off
- Power-On Auto Record
- Reset WiFi Setting
- Language
- Format Card
- System



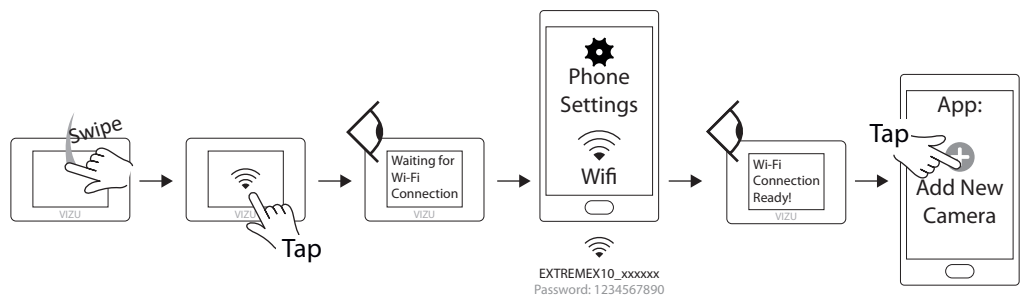
12

Make a WIFI connection

Een WIFI verbinding maken
 Eine WLAN-Verbindung herstellen
 Faire une connexion WIFI
 Realizar una conexión WIFI
 Eseguire un connessione WIFI



Install GoLive Cam



For additional instructions on wifi and streaming, visit govizu.com.

Specifications	Specificaties	Technische Daten	Spécifications	Especificaciones	Specificazioni
Touch screen 2.0 inch display Micro HDMI connection Micro USB connection 10 meters waterproof Operation time: 1,5 hour Dimensions: 64 x 46 x 29 mm Weight: 95 g	Touchscreen 2.0 inch display Micro HDMI verbinding Micro USB verbinding 10 meter waterdicht Gebruiksduur: 1,5 uur Dimensies: 64 x 46 x 29 mm Gewicht: 95 g	Touchscreen 2.0 inch Display Micro HDMI verbinding Micro USB verbinding 10 Meter Wasserdicht Betriebszeit: 1,5 Stunden Abmessungen: 64 x 46 x 29 mm Gewicht: 95 g	Écran tactile 2.0 inch affichage Micro HDMI connexion Micro USB connexion 10 mètres étanche Temps d'opération: 1,5 heures Dimensions: 64 x 46 x 29 mm Poids: 95 g	Pantalla táctil 2.0 inch pantalla Micro HDMI conexión Micro USB conexión 10 metros impermeabilidad Tiempo de operación: 1,5 horas Dimensiones: 64 x 46 x 29 mm Peso: 95 g	Touchscreen 2.0 inch schermata Micro HDMI connessione Micro USB connessione 10 metri impermeabile Tempo di funzionamento: 1,5 ore Dimensioni: 64 x 46 x 29 mm Peso: 95 g