

# Quickstart guide

VEXGIMBAL  
Gimbal stabilizer

# VIZU

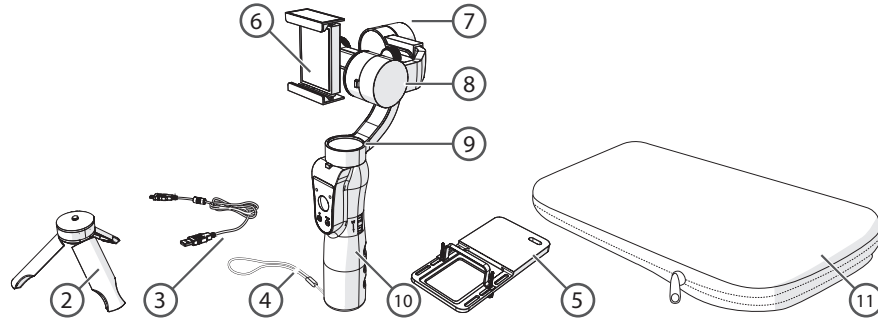


- (EN) For more information visit [www.govizu.com](http://www.govizu.com)
- (NL) Voor meer informatie zie [www.govizu.com](http://www.govizu.com)
- (DE) Für weitere Informationen siehe [www.govizu.com](http://www.govizu.com)
- (FR) Pour plus d'informations, voir [www.govizu.com](http://www.govizu.com)
- (ES) Para más información, consulte [www.govizu.com](http://www.govizu.com)
- (IT) Per ulteriori informazioni consultare [www.govizu.com](http://www.govizu.com)



## 1 Check the contents and main parts

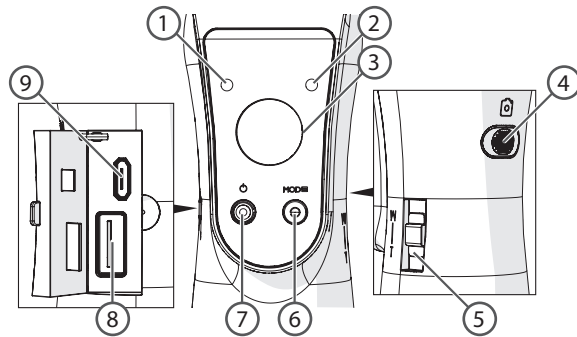
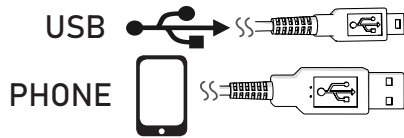
Controleer de inhoud en belangrijkste onderdelen  
Kontrollieren Sie den Inhalt und hauptkomponenten  
Vérifiez le contenu et pièces principales  
Revise el contenido y partes principales  
Controllare il contenuto e le parti principali



1	Gimbal stabilizer
2	Tripod
3	Charging cable
4	Keycord
5	Actioncam holder
6	Smartphone clamp
7	Roll motor
8	Tilt motor
9	Pan motor
10	Handle
11	Case

## 2 Buttons, functions and charging

Knoppen, functies en laden  
Tasten, Funktionen und laden  
Boutons, fonctions et charger  
Botones, funciones y cargar  
Pulsanti, funzioni e carico

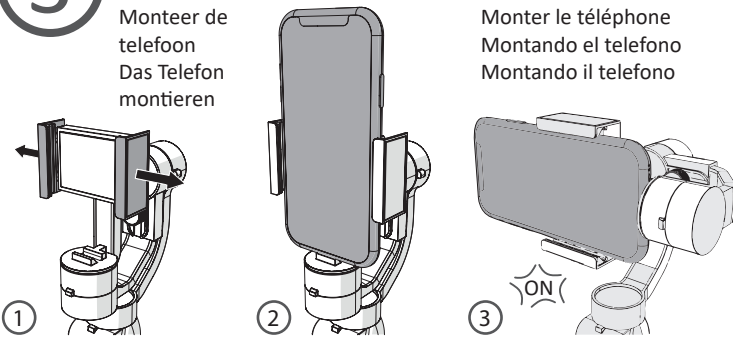


1	Battery level indicator
2	Status level indicator
3	Joystick
4	Photo button
5	Zoom switch
6	Mode button
7	On/off button
8	USB port for charging phone
9	Micro USB port for charging gimbal

## 3 Mounting the phone

Monteer de telefoon  
Das Telefon montieren

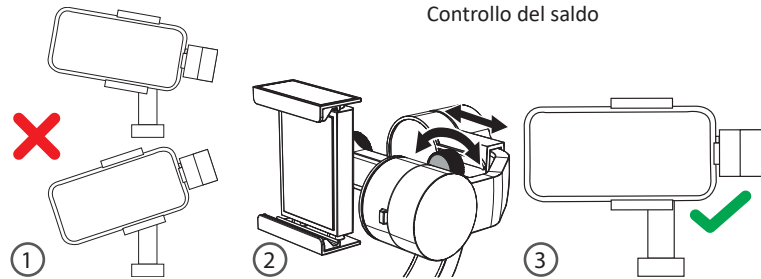
Monter le téléphone  
Montando el telefono  
Montando il telefono



## 4 Checking balance

Balans controleren  
Balance prüfen

Solde de vérification  
Balance de cheques  
Controllo del saldo



## 5 Turn on the device

Schakel het apparaat in  
Schalten Sie das Gerät ein  
Allumer l'appareil  
Enciende el dispositivo  
Accendi il dispositivo



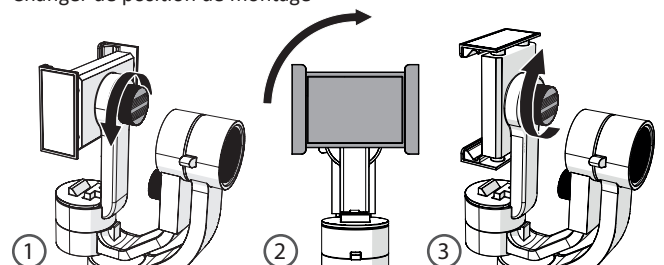
Let go when flashing green

Status indicator light	Meaning
	Processing instructions
	Switching on
	Charge gimbal
	Overload shutdown

## 6 Changing mounting position

Veranderen van de montagepositie  
Montageposition ändern  
Changer de position de montage

Cambio de posición de montaje  
Cambiando la posizione di montaggio

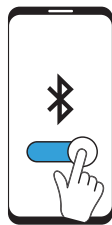
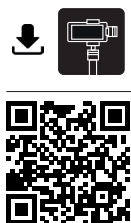


## 7 Installing and connecting with the app

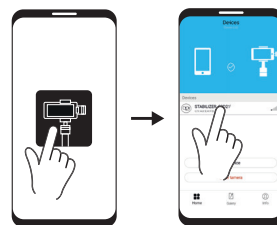
Installeren en verbinding maken met de app  
 Installeren und Verbinden mit der App  
 Installer et connecter avec l'application  
 Instalación y conexión con la aplicación  
 Installazione e connessione con l'app



Download: Gimbal Pro



Activate Bluetooth



Open app and select gimbal stabilizer

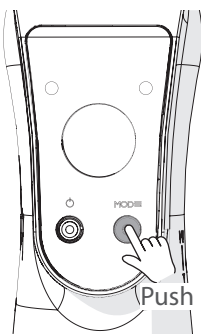


Camera will open directly

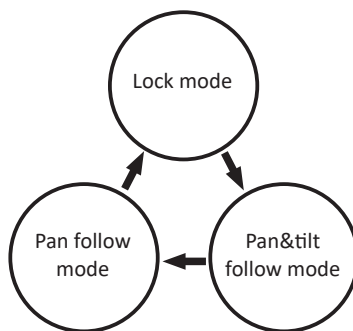
## 8 Switching between modes

Schakelen tussen modi  
 Betriebsarten wechseln  
 Modes de commutation  
 Modos de conmutación  
 Modalità di commutazione

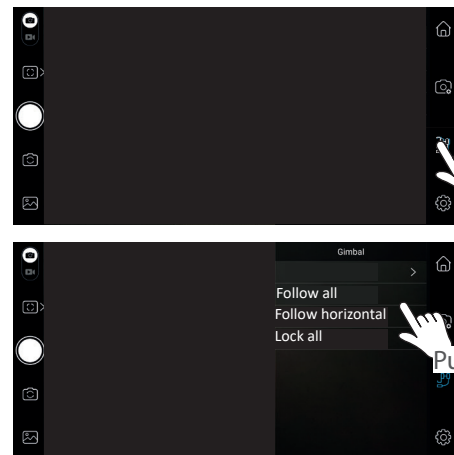
Switching mode with gimbal



Modes available (default lock mode)



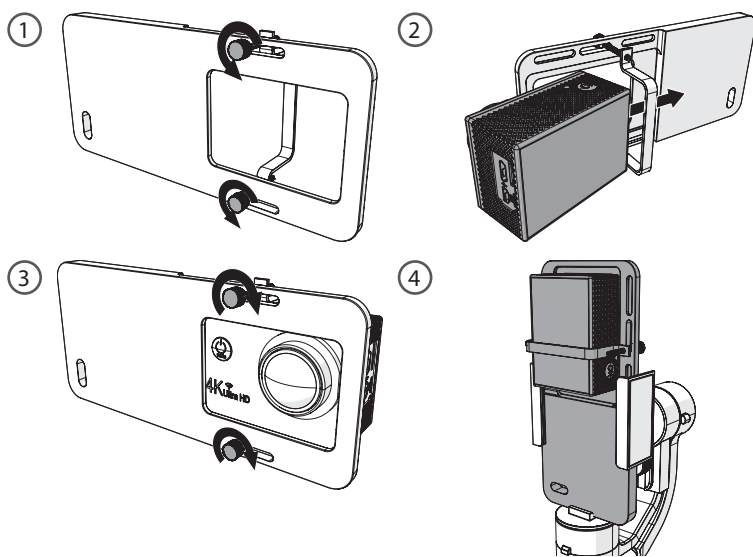
Switching mode in the app



## 9 Mounting the action cam

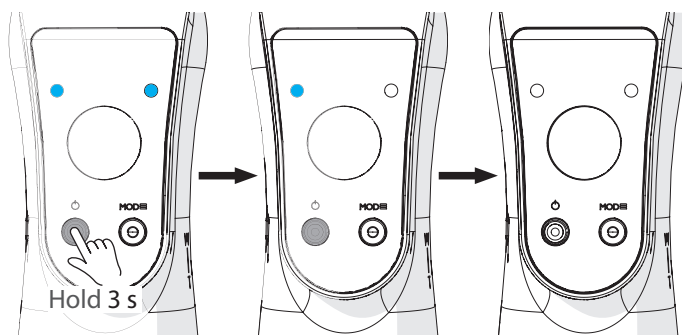
Monteer de action cam  
 Montieren der Action-Cam  
 Monter la caméra d'action

Montando la camera de accion  
 Montando la action cam



## 10 Turn off the device

Schakel het apparaat uit  
 Schalten Sie das Gerät aus  
 Éteindre l'appareil  
 Apagar el dispositivo  
 Spegner il dispositivo



Specifications	Specificaties	Technische Daten	Spécifications	Especificaciones	Specificazioni
Compatible models: Smartphone under 6.4", Vizu action cam range Connectivity: Bluetooth Operation time: 12 hours Weight: 423 g Operating temperature: 0 °C - 40 °C Warranty: 24 months	Geschikte modellen: Smartphones onder 6.4", Vizu action cam lijn Connectiviteit: Bluetooth Gebruiksduur: 12 uur Gewicht: 423 g Gebruikstemperatuur: 0 °C - 40 °C Garantie: 24 maanden	Kompatible Modelle: Smartphone unter 6.4", Vizu Action-Cam Angebot Konnektivität: Bluetooth Betriebszeit: 12 Stunden Gewicht: 423 g Betriebstemperatur: 0 °C - 40 °C Garantie: 24 Monate	Modèles compatibles: Smartphone de moins de 6.4", Vizu plage d'action cam Connectivité: Bluetooth Temps d'opération: 12 heures Poids: 423 g Température de fonctionnement: 0 °C - 40 °C Garantie: 24 mois	Modelos compatibles: Smartphone bajo 6.4", Vizu rango de camera de accion Connectividad: Bluetooth Tiempo de operación: 12 horas Peso: 423 g Temperatura de funciona- miento: 0 °C - 40 °C Garantía: 24 meses	Modelli compatibili: Smartphone sotto 6.4", Vizu gamma di action cam Connettività: Bluetooth Tempo di funzionamento: 12 ore Peso: 423 g Temperatura di esercizio: 0 °C - 40 °C Garanzia: 24 mesi