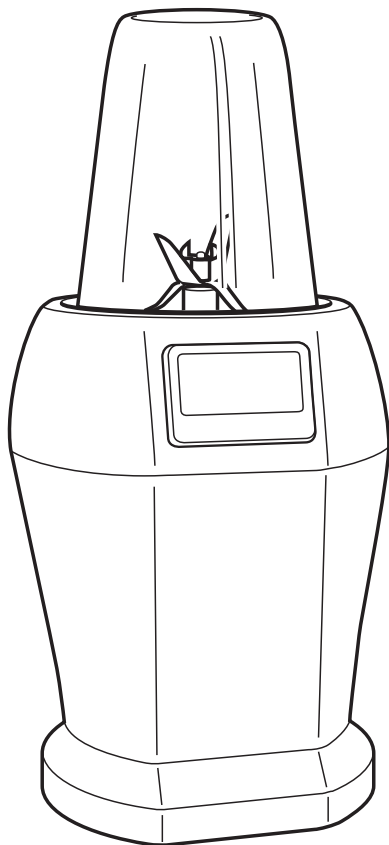


NUTRI NINJA®

Pro Blender

BL450UK series

OWNER'S GUIDE



www.ninjakitchen.eu

0800 862 0453

IMPORTANT SAFETY INSTRUCTIONS

For Household Use Only

WHEN USING ELECTRICAL APPLIANCES, BASIC SAFETY PRECAUTIONS SHOULD ALWAYS BE FOLLOWED, INCLUDING THE FOLLOWING:

READ ALL INSTRUCTIONS BEFORE USING YOUR NUTRI NINJA® PRO BLENDER.

⚠ WARNING: Extension cords are not recommended for use with this product.

⚠ WARNING: The blades are not affixed to the unit. They are removable and very sharp. Handle with care!

⚠ CAUTION: In order to avoid a hazard due to inadvertent resetting of the thermal cut-out, this appliance must not be supplied through an external switching device, such as a timer, or connected to a circuit that is regularly switched on and off by the utility.

IMPORTANT: This appliance is not intended for use by persons with reduced physical, sensory or mental capabilities, or lack of experience and knowledge, unless they have been given supervision or instruction concerning use of the appliance by a person responsible for their safety.

Children shall not use or play with this appliance. Close supervision is necessary to keep appliance and cord out of reach of children during use.

⚠ WARNING:

TO REDUCE THE RISK OF FIRE, ELECTRIC SHOCK OR INJURY:

1. **⚠ CAUTION:** The blades are not affixed to the unit. They are removable and extremely sharp. When handling the blade assemblies, do not hold the blades but rather always hold by the base of the blade assembly. Blades are sharp. Handle carefully!
2. **⚠ CAUTION: DO NOT BLEND HOT LIQUIDS.** Allow the liquids and foods to cool to room temperature before blending.
3. **⚠ CAUTION:** Do not blend dry ingredients unless pulsing for short intervals per the instructions. Continuous blending dry ingredients will overheat the blender.
4. To protect against electrical shock, do not submerge the appliance or allow the power cord to come into contact with water or any other liquid.
5. **DO NOT** allow children to operate the appliance or use as a toy. Close supervision is necessary when any appliance is used near children.
6. Never leave an appliance unattended when in use.
7. Turn the appliance off and remove the power cord from the electrical outlet when not in use, before assembling or disassembling parts, accessing parts that move while in use and before cleaning. To unplug, grasp the plug and pull from the electrical outlet. Never pull from the power cord.
8. **DO NOT** abuse the power cord. Never carry the appliance by the power cord or yank it to disconnect from electrical outlet; instead, grasp the plug and pull to disconnect.
9. **DO NOT** use with damaged cord or plug.

10. **DO NOT USE** if the appliance is not working, has been dropped, dropped into water, damaged or left outdoors.
11. **NO SERVICEABLE PARTS.** Incorrect re-assembly or repair can cause a risk of electrical shock or injury to persons when the appliance is used. Contact Customer Service.
12. If the supply cord is damaged, it must be replaced by the manufacturer, its service agent or similarly qualified persons in order to avoid a hazard.
13. **DO NOT** let the power cord hang over the edge of table or counter or touch hot surfaces such as the stove.
14. Always use the appliance on a dry, level surface.
15. Keep hands, hair, clothing, as well as utensils out of container while processing or blending to reduce the risk of severe injury to persons or damage to the appliance. A scraper may be used but only when the appliance is not running.
16. Avoid contact with moving parts.
17. **DO NOT** attempt to sharpen blades.
18. **DO NOT** use the appliance if blade assembly is bent or damaged.
19. To reduce the risk of injury, never attempt to place the Pro Extractor Blades™ onto the motor base without first assembling the Pro Extractor Blades to the Nutri Ninja Cup.
20. **DO NOT** operate this appliance on or near any hot surfaces (such as gas or electric burner or in a heated oven).
21. The use of attachments or accessories including canning jars, not recommended by the manufacturer may result in fire, electric shock or personal injury.
22. **DO NOT** remove any container from the motor base while the appliance is in operation. Always unplug the unit when not in use.
23. To reduce the risk of injury, **NEVER** operate the appliance without the blade assembly in place; **DO NOT** try to defeat the interlock mechanism; make sure that the attachment is properly installed before operating the appliance.
24. **DO NOT** expose containers to extreme temperature changes.
25. **DO NOT** overfill. Do not exceed "MAX" fill line.
26. **DO NOT** operate the appliance empty.
27. If the appliance overheats, a thermal switch will become activated and shut off the motor. To reset, unplug the appliance and let it cool down for approximately 30 minutes before using again.
28. To reduce the risk of burns, always allow the appliance to cool before taking off parts and before cleaning.
29. Max ON time is 1 minute under 900W load. If the appliance overheats, a thermal switch will become activated and shut off the motor. To reset, unplug the appliance and let it cool down for approximately 30 minutes before using again.
30. **THIS PRODUCT IS INTENDED FOR HOUSEHOLD USE ONLY.** Do not use this appliance for anything other than its intended use. Do not use outdoors.
31. Appliance accessories are not intended to be used in the microwave as it may result in damage to the accessories.

SAVE THESE INSTRUCTIONS

Contents

Thank you for purchasing the Nutri Ninja® Pro Blender

Getting to Know Your Nutri Ninja Pro Blender	4
Before First Use	6
Use of the Nutri Ninja Cups.....	7
Suggested Uses.....	8
Care & Maintenance	9
Troubleshooting Guide.....	10
Replacement Parts.....	10

This appliance complies with the WEEE-Directive 2012/19/EU on the disposal of electrical and electronic equipment (WEEE).



This marking indicates that this product should not be disposed with other household wastes throughout the EU. To prevent possible harm to the environment or human health from uncontrolled waste disposal, recycle it responsibly to promote the sustainable reuse of material sources. To return your used device, please use the return and collection systems or contact the retailer where this product was purchased. They can take this product for environmental safe recycling.

This appliance complies with the European directives for electromagnetic compatibility (EMC) 2014/30/EU and its revisions, as well as Low Voltage Directive (LVD) 2014/35/EU and its revisions.

Guarantee: This product is unconditionally guaranteed for one year against all defects of workmanship and materials. This guarantee does not affect your statutory rights. If this product proves unsatisfactory please contact our customer service department on freephone 0800 862 0453 or by e-mail ukservice@euro-pro.com.

THIS BOOK COVERS MODEL NUMBERS:

BL450UK 30
BL450UKBK 30
BL450UKCR 30
BL450UKRD 30

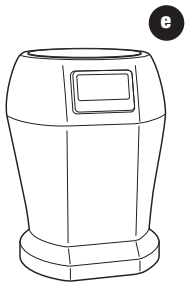
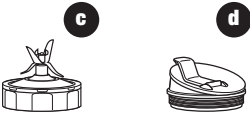
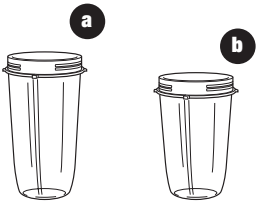
TECHNICAL SPECIFICATIONS

Voltage: 220-240V~, 50/60Hz
Power: 900 Watts

Nutri Ninja® Cup Capacity: 500ml
650ml



Getting To Know Your Nutri Ninja® Pro Blender



- a** 650 ml Nutri Ninja Cup
- b** 500 ml Nutri Ninja Cup

- c** Pro Extractor Blades™
- d** Sip & Seal® Lid (x2)
- e** Motor Base

The Nutri Ninja® Pro Blender is a high powered innovative tool with a compact design and outstanding performance. It is perfect for ice crushing, chopping, blending, and nutrient and vitamin extraction. Blend and go with the convenient Sip & Seal® lids, create delicious drinks to get you out the door quickly! Best results are achieved when you Pulse.



FEATURES:

- Nutrient & Vitamin Extraction
- 900 Watt Motor
- Personalised, healthy drinks and juices on the go
- Sip & Seal lids for drinks on the go
- Nutri Ninja Cups, BPA free
- Cord storage

Before First Use

PLEASE KEEP THESE IMPORTANT SAFEGUARDS IN MIND WHEN USING THE APPLIANCE:

- ⚠ WARNING:** Never leave the appliance unattended while in use.
- ⚠ CAUTION:** Do not blend hot liquids. Allow liquids and foods to cool to room temperature before blending.
- ⚠ CAUTION:** Blades are sharp! Use extreme caution when handling the blade assemblies. Always hold them by the base of the blade assembly.
- ⚠ CAUTION:** Never remove the container while the appliance is still running.
- ⚠ CAUTION:** We do not recommend grinding in any of our Nutri Ninja® Cups.

IMPORTANT: Never run the appliance empty.

IMPORTANT: Appliance accessories are not intended to be used in the microwave as it may result in damage to the accessories.

- ⚠ CAUTION:** Blade assemblies are sharp and removable, handle with care. When handling the blade assemblies, do not hold the blades, always hold by the base of the blade assembly.

- 1 Remove all packaging material and labels from the appliance.
- 2 Wash the lids, cups, and attachments in warm, soapy water with a soft cloth.

- ⚠ CAUTION:** Handle the blade assemblies with care when washing as the blades are very sharp.

- 3 Rinse and dry thoroughly.
- 4 Cups, lids, and attachments are all dishwasher safe. It is recommended that the lids and attachments be placed on the top rack. Ensure that the attachments are removed from the cups before placing in the dishwasher.
- 5 Wipe the motor base clean with a damp cloth.

Use of the Nutri Ninja® Cups

⚠ WARNING: Never leave the appliance unattended while in use.

⚠ CAUTION: Pro Extractor Blades™ are sharp and removable, handle with care. When handling the Pro Extractor Blades, do not hold the blades, always hold by the base of the blade assembly.

⚠ CAUTION: DO NOT BLEND HOT LIQUIDS. Allow the liquids and foods to cool to room temperature before blending.

IMPORTANT: Make sure that the motor base is plugged in for use.

IMPORTANT: When processing soft dry ingredients such as day-old bread or cheese use quick, short 1 second pulses. Do not overfill to avoid overheating the appliance. Allow the appliance to cool after each use.

ASSEMBLY

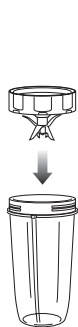


Fig. 1

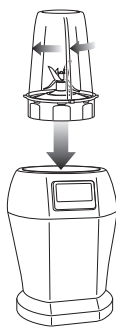


Fig. 2

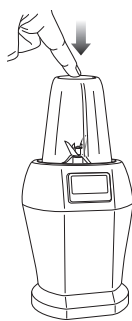


Fig. 3

1 Place the motor base on a clean, dry, level surface such as a counter or table top.

2 Make sure that the motor base is plugged in for use.

3 Add ingredients to the cup.

NOTE: Do not overfill! to avoid spilling, do not add ingredients past the "MAX" fill line.

4 Place the Pro Extractor Blades onto the cup and twist it on tightly until you have a good seal. **(Fig. 1)**

5 Turn the cup upside down and place it onto the motor base, aligning the tabs on the cup with the motor base. Turn it clockwise, the unit is ready for use. **(Fig. 2)**

6 Press down on the top of the cup in short intervals to activate. **(Fig. 3)**

USE

REMOVAL

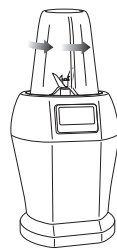


Fig. 4

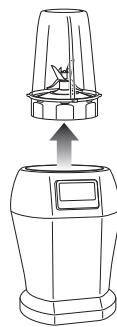


Fig. 5

7 When you have reached your desired consistency, stop the appliance by removing your hand from the cup.

8 To remove the cup, ensure that the motor has stopped running. Then turn the cup anticlockwise **(Fig. 4)** and pull straight up to remove. **(Fig. 5)**

9 Turn the cup upright and remove the Pro Extractor Blades by twisting the Pro Extractor Blades anticlockwise. Be sure to store the Pro Extractor Blades attached to an empty cup when not in use.

10 Twist the Sip & Seal® lid onto the cup to enjoy your drink on the go. Press flip top cap firmly into the opening to get the best seal. The flip top cap locks open when pressed backward.

11 Make sure that the motor base is unplugged when not in use.

Suggested Uses

PURPOSE / FUNCTION	SUGGESTED CUP	TYPE OF FOOD
Chopping / Pulsing	500 ml Nutri Ninja cup 650 ml Nutri Ninja cup	Salsa Leafy Herbs
Mixing	500 ml Nutri Ninja cup 650 ml Nutri Ninja cup	Batters Dips
Sauces	500 ml Nutri Ninja cup 650 ml Nutri Ninja cup	Vinaigrettes Salad Dressings Simple Sauces
Frozen Blending	500 ml Nutri Ninja cup 650 ml Nutri Ninja cup	Ice Frozen Fruit Ice Cream
Nutrient Juices/Smoothies	500 ml Nutri Ninja cup 650 ml Nutri Ninja cup	Fruits Vegetables Leafy Greens

FILLING YOUR NUTRI NINJA®

Want to create smooth and delicious drinks using your Nutri Ninja cups? Simply add ingredients to the container in the order they appear in each recipe, or follow the guideline below when creating your own customised recipes. **(Fig. 1)**

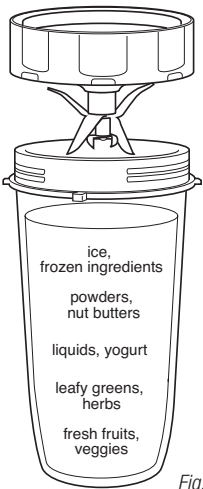


Fig. 1

HOW TO CLEAN

- ⚠ CAUTION:** Make sure that the motor base is unplugged from the power source before inserting or removing any attachment and before cleaning.
- ⚠ CAUTION:** DO NOT immerse the motor base into water or any other liquid.
- ⚠ CAUTION:** Use caution when handling the blade assemblies as the blades are very sharp.

- 1 Separate/remove all parts from each other.
- 2 Clean the motor base with a damp cloth and wipe dry.
- 3 Place cups in the dishwasher. Place the lids, and attachments on the top rack.

OR

- 4 Carefully hand wash the lids, Nutri Ninja® cups, and blade assemblies in warm, soapy water with a soft cloth.

If the appliance needs servicing, please call customer service at 0800 862 0453.

HOW TO STORE

- 1 Store the Nutri Ninja Pro Blender upright. Secure the power cord underneath the base by wrapping the cord around the cord wrap. Do not place anything on top. Store the cups and the rest of the attachments along side the appliance where they will not be damaged and won't cause a hazard.

RESETTING THE MOTOR THERMOSTAT

The Nutri Ninja Pro Blender features a unique safety system which prevents damage to the unit's motor and drive system should you inadvertently overload your appliance. If the appliance is being overloaded, the motor will stop. To reset the appliance, follow the resetting procedure below:

- 1 Unplug the appliance from the electrical outlet.
- 2 Remove and empty the cup and ensure that no food is jamming the cutting blades.
- 3 Allow the appliance to cool for approximately 30 minutes.
- 4 Re-install the cup onto the base and re-plug the appliance into the electrical outlet.
- 5 Proceed to use the appliance as before while making sure not to exceed the recommended maximum capacities.

Troubleshooting Guide

PROBLEMS	POSSIBLE REASONS & SOLUTIONS
Motor doesn't start or attachment doesn't rotate.	<ul style="list-style-type: none">For the cups, make sure that the tabs are seated in the slots and turned clockwise.
Food is unevenly chopped.	<ul style="list-style-type: none">Either you are chopping too much food at once, or you are not pulsing properly. Reduce the amount of food in the cup.
Food is too finely chopped or too watery.	<ul style="list-style-type: none">The food has been over processed. Use short pulses for best results. Press down on the cup in short intervals.
You cannot achieve snow from ice cubes.	<ul style="list-style-type: none">For best results use ice straight from the freezer. Try using short pulses instead of one long one.Make sure the cup is completely dry before adding ice.
Cup is leaking.	<ul style="list-style-type: none">Make sure that your lid or blade assembly is properly assembled to the cup. Leaking may occur if it is misaligned when twisted onto the cup. Turn the lid tightly clockwise.
Unit doesn't turn on.	<ul style="list-style-type: none">Make sure the unit is plugged in.Rotate and press down on the cup to turn the unit on.Make sure the blade assembly is properly assembled to the cup and that it is not misaligned.
Unit doesn't turn off.	<ul style="list-style-type: none">Unplug the power cord from the electrical outlet and call customer service for support.
Doesn't mix well.	<ul style="list-style-type: none">Pulse ingredients for best results. Press down on the cup in short intervals for even blending and chopping. For frozen ingredients, pulse in short intervals of 2-5 seconds and repeat.
Lid/blade assembly will not properly align to the cup.	<ul style="list-style-type: none">Set the cup on a level surface. Place the lid or blade assembly on top of the cup and align the threads so that the lid/blades sit flat on the cup. Twist clockwise so that the lid/blades evenly align to the cup until you have a tight seal.

Replacement Parts

ORDERING REPLACEMENT PARTS

To order additional parts and attachments, please visit our website: www.ninjakitchen.eu or feel free to contact customer service: 0800 862 0453.



Euro-Pro Europe Limited
15 Mariner Court
Calder Park
Wakefield
WF4 3FL

0800 862 0453

www.ninjakitchen.eu

Copyright © 2016 Euro-Pro Europe Limited

Euro-Pro, Nutri-Ninja, Ninja and **Sip & Seal** are
registered trademarks of Euro-Pro Europe Limited.

Pro Extractor Blades is a trademark of Euro-Pro Europe
Limited.

Printed in China

Illustrations may differ from actual product. We are constantly striving to improve
our products, therefore the specifications contained herein are subject to change
without notice.

BL450UK_30_IB_160129_1

