

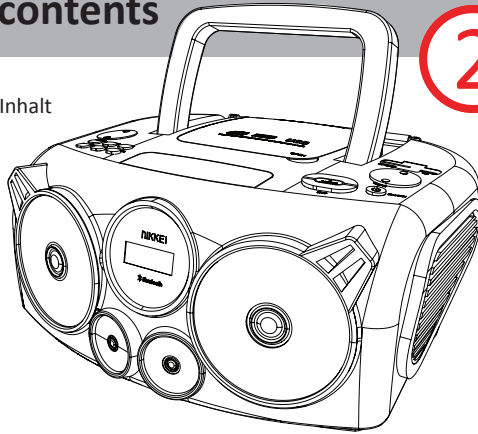
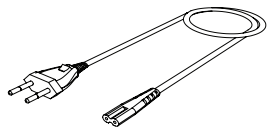


- EN** For more information see www.nikkei.eu
- NL** Voor meer informatie zie www.nikkei.eu
- DE** Für weitere Informationen siehe www.nikkei.eu
- FR** Pour plus d'informations, veuillez consulter le site www.nikkei.eu
- ES** Para más información, visite www.nikkei.eu
- DA** For mere information besøg www.nikkei.eu
- FI** Lisätietoja löydät osoitteesta www.nikkei.eu



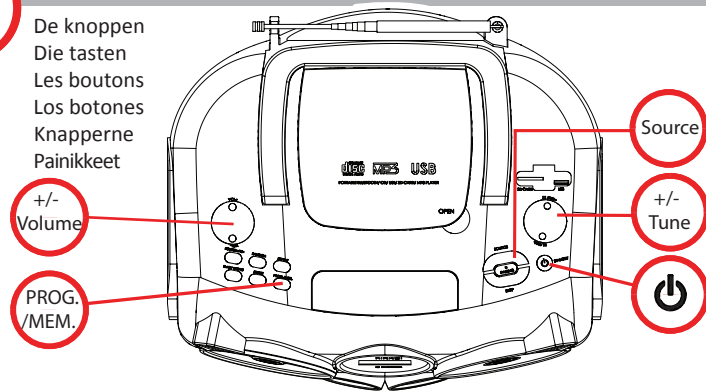
1 Check the contents

Controleer de inhoud
Kontrollieren Sie den Inhalt
Vérifiez le contenu
Revise el contenido
Kontroller indholdet
Tarkista sisältö



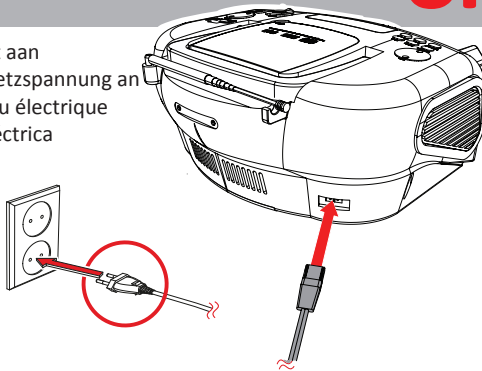
2 The buttons

De knoppen
Die tasten
Les boutons
Los botones
Knapperne
Painikkeet



3 Connect to the mains

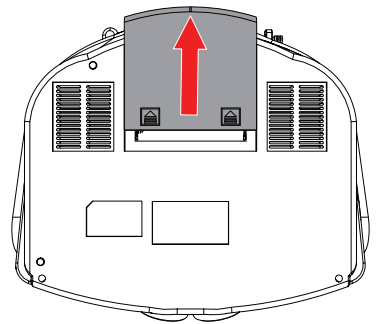
Sluit op het lichtnet aan
Schließen Sie die Netzspannung an
Raccordez au réseau électrique
Conecte a la red eléctrica
Tilslut til lysnettet
Kytke verkkovirtaan



OR

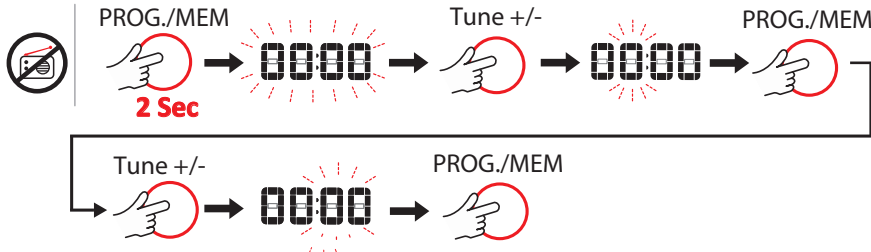
Place batteries

Plaats de batterijen
Legen Sie die Batterien ein
Placez les piles
Coloque las pilas
Sæt batteriet i
Paristojen asettaminen



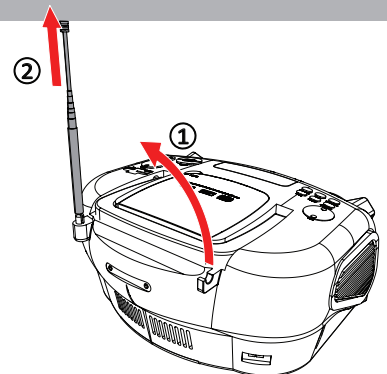
4 Setting the time

Tijd instellen
Zeit einstellen
Régler l'heure
Configuración del tiempo
Indstil tid
Aseta aika



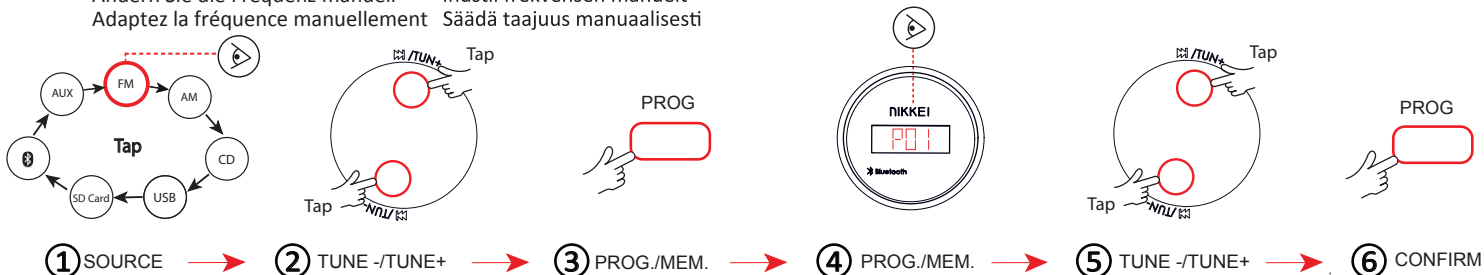
5 Slide out the antenna

Schuif de antenne uit
Antenne ausziehen
Dépliez l'antenne
Extienda la antena
Skub antennen ud
Työnnä antenni ulos



6 Manually adjust the frequency

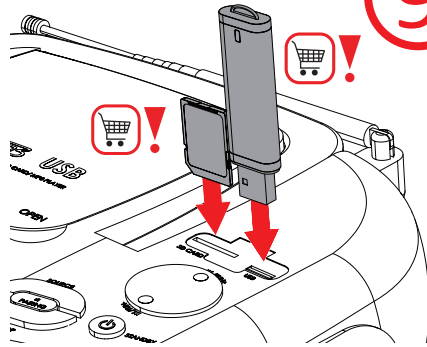
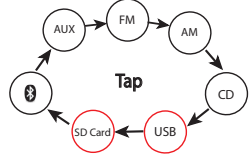
Pas handmatig de frequentie aan
Ändern Sie die Frequenz manuell
Adaptez la fréquence manuellement
Ajuste manual de frecuencia
Indstil frekvensen manuell
Säädä taajuus manuaalisesti



8

USB and Memory card

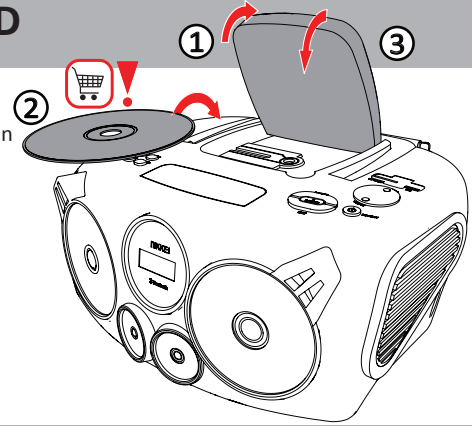
USB en geheugenkaart
 USB und Speicherkarte
 USB et carte mémoire
 USB y tarjeta de memoria
 USB og hukommelseskort
 USB ja muistikortti



9

Insert a CD

Plaats een CD
 Legen Sie eine CD ein
 Insérez un CD
 Insérez un CD
 Læg en CD i
 Aseta CD paikalleen

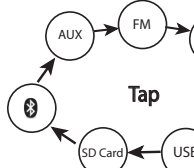


10

Program track sequence

Programmeer track volgorde
 Programmieren Sie die Titelreihenfolge
 Programmer l'ordre de la piste

Secuencia de pistas del programa
 Programmering af sporesekvensen
 Ohjelmoi kappalejärjestys



1 SOURCE

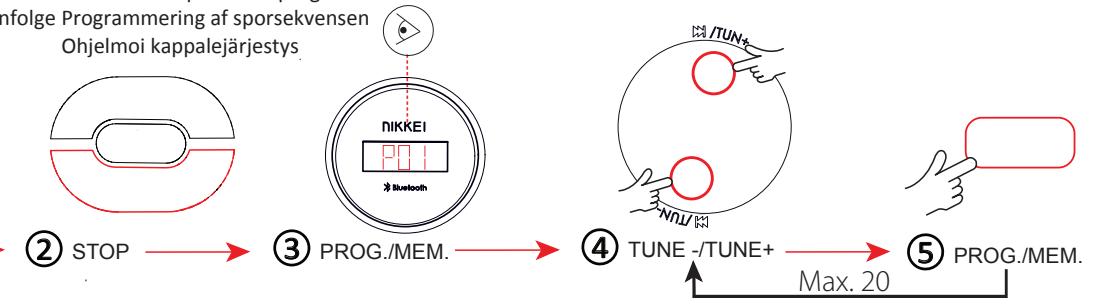
2 STOP

3 PROG./MEM.

4 TUNE -/TUNE+

5 PROG./MEM.

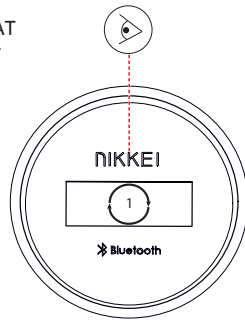
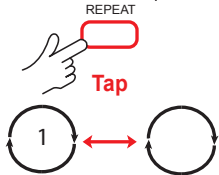
Max. 20



11

Using the REPEAT function

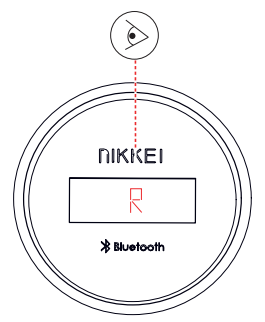
De functie REPEAT
 Verwendung der Funktion REPEAT
 Utilisation de la fonction REPEAT
 Uso de la función REPEAT
 Brug af REPEAT-funktionen
 REPEAT-toiminnon käyttäminen



12

Using the RANDOM function

De functie RANDOM
 Verwendung der Funktion RANDOM
 Utilisation de la fonction RANDOM
 Uso de la función RANDOM
 Brug af RANDOM-funktionen
 RANDOM-toiminnon käyttäminen

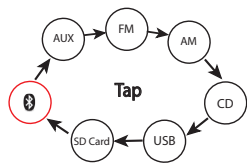


13

Bluetooth connection

Bluetooth verbinding
 Bluetooth-Verbindung
 Connexion Bluetooth

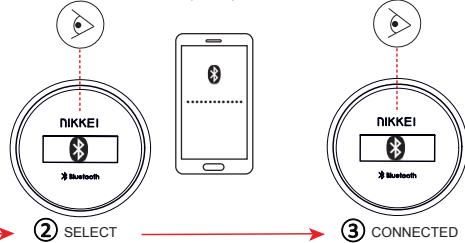
Conexión Bluetooth
 Bluetooth tilslutning
 Bluetooth-yhteys



1 SOURCE

2 SELECT

3 CONNECTED

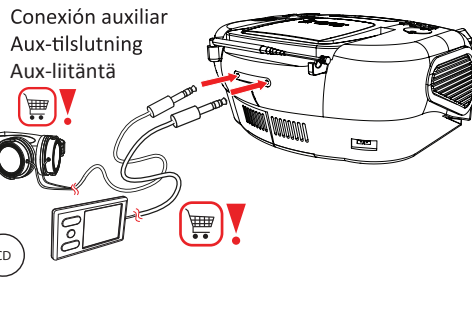
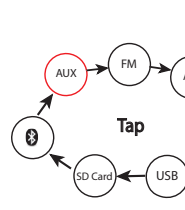


14

AUX connection

Aux aansluiting
 Buchse AUX
 Connexion AUX

Conexión auxiliar
 Aux-tilslutning
 Aux-liitäntä



Specifications

Power supply:
 AC 230V ~ 50Hz
 Speaker output: 2x3W
 Display: LCD
 Weight: 2600 g.
 Dimensions:
 37,2 x 16 x 27,3 cm
 AM/FM-tuner
 USB connection
 Slot-in for micro SD card
 CD player
 Bluetooth connection
 AUX IN jack: 3.5 mm
 Headphone jack
 Clock functions
 Batteries: 6 x D
 Warranty: 24 months

Stroomvoeding:
 AC 230V ~ 50Hz
 Luidspreker output: 2x3W
 Scherm: LCD
 Gewicht: 2600 g.
 Afmetingen:
 37,2 x 16 x 27,3 cm
 AM/FM-tuner
 USB aansluiting
 Micro SD-kaart ingang
 CD-speler
 Bluetooth verbinding
 Aux IN-aansluiting: 3.5 mm
 Koptelefoonaansluiting
 Klokfuncties
 Batterijen: 6 x D
 Garantie: 24 maanden

Stromzufuhr:
 AC 230V ~ 50Hz
 Lautsprecher-Output: 2x3W
 Display: LCD
 Gewicht: 2600 g.
 Abmessungen:
 37,2 x 16 x 27,3 cm
 AM/FM-Tuner
 USB Anschluss
 Anschluss für Micro-SD-Karte
 CD-Player
 Bluetooth-Verbindung
 Buchse AUX IN: 3.5 mm
 Kopfhörerbuchse
 Uhrenfunktionen
 Batterien: 6 x D
 Garantie: 24 Monate

Alimentation électrique:
 AC 230V ~ 50Hz
 Sortie haut-parleur: 2x3W
 Écran: LCD
 Poids: 2600 g.
 Dimensions:
 37,2 x 16 x 27,3 cm
 AM/FM-Tuner
 Port USB
 Connecteur pour carte micro SD
 Lecteur CD
 Connexion Bluetooth
 Prise AUX IN: 3.5 mm
 Prise casque
 Fonctions horloge
 Piles: 6 x D
 Garantie: 24 mois

Fuente de alimentación:
 AC 230V ~ 50Hz
 Salida-altavoz: 2x3W
 Pantalla: LCD
 Peso: 2600 g.
 Dimensiones:
 37,2 x 16 x 27,3 cm
 Sintonizador AM/FM
 Conexión USB
 Entrada para tarjeta micro SD
 reproductor de CD
 Conexión Bluetooth
 Toma AUX IN: 3.5 mm
 Toma de auriculares
 Funciones de reloj
 Pilas: 6 x D
 Garantía: 24 meses

Strømforsyning:
 AC 230V ~ 50Hz
 Højtaler-output: 2x3W
 Skærm: LCD
 Vægt: 2600 g.
 Dimensioner:
 37,2 x 16 x 27,3 cm
 AM/FM-tuner
 USB tilslutning
 Slids til micro SD
 cd-afspiller
 Bluetooth tilslutning
 AUX IN-stik: 3.5 mm
 Hovedtelefonstik
 Urfunktioner
 Batterier: 6 x D
 Garanti: 24 måned

Syöttövirta:
 AC 230V ~ 50Hz
 Kaiutinlähö: 2x3W
 Näyttö: LCD
 Paino: 2600 g.
 Mitat:
 37,2 x 16 x 27,3 cm
 AM/FM-viritin
 USB -liitäntä
 Micro SD-korttipaikka
 CD-soitin
 Bluetooth-yhteys
 AUX IN-liitin: 3.5 mm
 Kuulokkeen liitin
 Kellotoiminnot
 paristoa: 6 x D
 Takuu: 24 kuukautta