



motorola



# USER'S GUIDE

Wi-Fi® Outdoor Home Video Camera

Model: FOCUS73

*The features described in this user's guide are subject to modifications without prior notice.*

# Welcome...

## *to your new Motorola Wi-Fi® Outdoor Home Video Camera!*

Thank you for purchasing your new Motorola Wi-Fi® Outdoor Home Video Camera.

If you have always wondered what happens when you are away, wonder no more. Now you can monitor your children, pets or property with this easy to use system. You can install the camera from your iPhone®/iPad® or Android™ devices only. In addition to your iPhone®/iPad® or Android™ devices you can also view the camera's video from your PC or Notebook.

Please keep your original dated sales receipt for your records. For warranty service of your Motorola product, you will need to provide a copy of your dated sales receipt to confirm warranty status. Registration is not required for warranty coverage.

For product related questions, please call:

+44 (0) 844 557 0890 (UK only)

+44 (0) 8187 62092 (ROI)

---

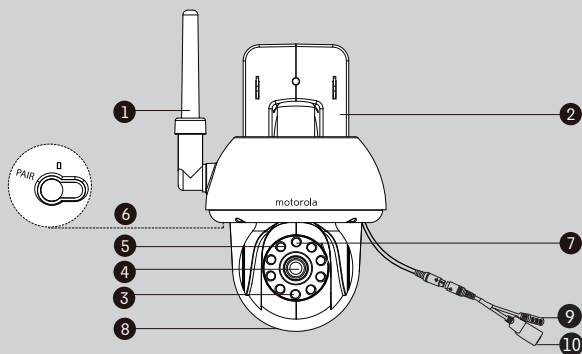
This User's Guide has all the information you need to make the most out of your product.

Please read the Safety Instructions on pages 5 - 6 before you install the unit.

### **Inside the Box**

- 1 x Wi-Fi® Camera Unit
- 1 x Power Adapter
- 1 x Quick Start Guide
- 1 x User Guide
- 4 x Mounting Screws and Dry Wall Plugs
- 1 x Tamper-proof Screw
- 1 x Metal Bracket
- 1 x Wrench Key
- 1 x Y-Shaped Power/LAN Cable connector

## Overview of your Camera



- |  |   |
|--|---|
| 1. Antenna                                 | 7. Power / Status Indicator   |
| 2. Wall mount base                         | 8. Dome Shape Cover   |
| 3. Infrared LEDs (for night vision)        | 9. Power connection socket  |
| 4. Camera Lens                             | 10. LAN socket*   |
| 5. Light Sensor (for night mode detection) | (Adaptive Ethernet socket for connecting with various network devices, such as hub, router, etc.) |
| 6. PAIR Button                             |   |

**\* An Ethernet connection is required when the Wi-Fi® connection is not optimal. Connect the Ethernet cable (not supplied) to the LAN interface, and then connect the other end to a spare port on your router.**

### Important guidelines for installing your Wi-Fi® Camera Unit

- Use of other 2.4 GHz products, such as other wireless networks, Bluetooth™ systems or microwave ovens may cause interference with this product. Keep the Wi-Fi® Camera Unit away from these types of products, or turn them off if they appear to be causing interference.
- Always ensure that you have a good Wi-Fi® connection available.



## Table of contents

<b>1. Safety Instructions</b> .....	<b>5</b>
<b>2. System Requirements</b> .....	<b>9</b>
<b>3. Getting started - Connecting Devices</b> .....	<b>10</b>
3.1 Setup.....	10
3.2 User Account and Camera Setup on Android™ Devices.....	11
3.2.1 Power On and Connect the FOCUS73 camera .....	11
3.2.2 Download the Hubble for Motorola Monitors App .....	11
3.2.3 Run the Hubble App on Android™ device .....	12
3.2.4 Add FOCUS73 Camera to your account .....	13
3.3 User Account and Camera Setup: Working with iPhone®/iPad® .....	17
3.3.1 Power ON and Connect the FOCUS73 camera .....	17
3.3.2 Download the Hubble for Motorola Monitors App .....	17
3.3.3 Run the Hubble App on your iPhone®/iPad® .....	18
3.3.4 Add FOCUS73 Camera to your account .....	19
<b>4. Camera</b> .....	<b>24</b>
4.1 Install your Camera and setting up.....	24
4.2 Camera Functions: Working with devices for Android™ .....	25
4.2.1 Add more cameras .....	25
4.2.2 Remove a camera .....	26
4.2.3 Change your Account Information .....	27
4.2.4 Camera settings .....	28
4.2.5 General setting .....	29
4.2.6 Features of the Hubble App .....	30
4.3 Camera Functions: Working with devices for iPhone®/iPad® .....	33
4.3.1 Add more cameras .....	33
4.3.2 Remove a camera .....	34
4.3.3 Change your Account Information .....	35
4.3.4 Camera settings .....	36
4.3.5 General settings .....	36
4.3.6 Hubble for Motorola Monitors Settings .....	38
4.3.7 Features of the Hubble App .....	39
4.4 Camera Functions: Working with PC/Notebook .....	40
<b>5. Procedure for resetting the Camera</b> .....	<b>41</b>
<b>6. Help</b> .....	<b>42</b>
<b>7. General Information</b> .....	<b>49</b>
<b>8. Technical Specifications</b> .....	<b>54</b>

# 1. Safety Instructions



## WARNING:

**STRANGULATION HAZARD** - In case this unit is being used to monitor infants or children, keep the unit and adapter cord more than 1 metre from the cot and out of their reach. Never place camera or cords inside a cot or near a bed. Secure the cord away from children's reach. Never use extension cords with AC Adapters. Only use the AC Adapters provided.

As with any electrical device, supervision of your pet's usage should be exercised until your pet is acclimated to the product. If your pet is prone to chewing, we strongly recommend you keep this and all other electrical devices out of its reach.

---

## Wi-Fi<sup>®</sup> CAMERA UNIT SET UP & USE:

---

- Determine a location for the Wi-Fi<sup>®</sup> Camera Unit that will provide the best view of the area you would like to monitor (ie back yard or front door).
- Fix the camera to a flat wall using the wall mounting plate and following the instructions provided.
- NEVER place the Wi-Fi<sup>®</sup> Camera Unit or cords inside a cot.

## **WARNING**

*This Wi-Fi® Camera Unit is compliant with all relevant electromagnetic field standards and is, when handled as described in the User's Guide, safe to use. Therefore, always read the instructions in this User's Guide carefully before using the device.*

- Adult assembly is required due to small parts. Keep all small parts away from children.
- This product is not a toy. Do not allow children to play with it.
- This Wi-Fi® Camera Unit is not a substitute for responsible adult supervision.
- Keep this user's guide for future reference.
- Do not place the Wi-Fi® Camera Unit or cords in the cot or within reach of the baby (the unit should be at least 1 metre away).
- Keep the cords out of reach of children and pets.
- Do not cover the Wi-Fi® Camera Unit with a towel or blanket.
- Test the Wi-Fi® Camera Unit and all its functions so that you are familiar with it prior to use.
- Do not use the Wi-Fi® Camera Unit near water.
- Do not install the Wi-Fi® Camera Unit near a heat source.
- Only use the power adapter provided. Do not use other power adapters as this may damage the device.
- Never use extension cords with power adapters.
- Do not touch the plug contacts with sharp or metal objects.

## **Important instructions:**

- **Read and Follow Instructions** - Please read all the safety and operating instructions before operating the product. Follow all operating instructions.
- **Retain Instructions** - The safety and operating instructions should be retained for future reference.
- **Heed Warnings** - Comply with all warnings on the product and in the operating instructions.
- **Polarization** - Do not defeat the safety purpose of the polarized or grounding-type plug. A polarized plug has two blades with one wider than

the other. A grounding type plug has two blades and a third grounding prong. The wide blade or the third prong is provided for your safety. If the supplied plug does not fit into your outlet, consult an electrician for replacement of the obsolete outlet.

- **Power Sources** - This product should be operated only from the type of power source indicated on the marking label. If you are not sure of the type of power supplied to your location, consult your camera dealer or local power company. For products intended to operate from battery power, or other sources, please refer to the operating instructions
- **Overloading** - Do not overload wall outlets or extension cords as this can result in the risk of fire or electric shock. Overloaded AC outlets, extension cords, frayed power cords, damaged or cracked wire insulation, and broken plugs are dangerous. They may result in a shock or fire hazard. Periodically examine the cord, and if its appearance indicates damage or deteriorated insulation, have it replaced by your service technician.
- **Power-Cord Protection** - Power supply cords should be routed so that they are not likely to be walked on or pinched by items placed upon or against them. Pay particular attention to cords at plugs, convenience receptacles, and the point where they exit from the product.
- **Surge Protectors** - It is highly recommended that the camera equipment be connected to a surge protector. Doing so will protect the equipment from damage caused by power surges. Surge protectors should bear the UL listing mark or CSA certification mark.
- **Uninterruptible Power Supplies (UPS)** - Because this product is designed for continuous, 24/7 operation, it is recommended that you connect the product to an uninterruptible power supply. An uninterruptible power supply has an internal battery that will keep the product running in the event of a power outage. Uninterruptible power supplies should bear the UL listing mark or CSA certification mark. **CAUTION:** Maintain electrical safety. Power line operated equipment or accessories connected to this product should bear the UL listing mark or CSA certification mark on the accessory itself and should not be modified so as to defeat the safety features. This will help avoid any potential hazard from electrical shock or fire. If in doubt, contact qualified service personnel.

- **Ventilation** - Slots and openings on the case are provided for ventilation to ensure reliable operation of the product and to protect it from overheating. These openings must not be blocked or covered. The openings should never be blocked by placing the camera equipment on a bed, sofa, rug, or other similar surface. This product should never be placed near or over a radiator or heat register. This product should not be placed in a built-in installation such as a bookcase or rack unless proper ventilation is provided and the product manufacturer's instructions have been followed.
- **Attachments** - Do not use attachments unless recommended by the product manufacturer, as they may cause a hazard.
- **Heat** - The product should be located away from heat sources such as radiators, heat registers, stoves, or other products (including amplifiers) that produce heat.
- **Accessories** - This camera should not be used with any unapproved accessories and should be secured to a wall using the wall mount provided. The mounting of this camera should be according to the manufacturer's instructions and use a mounting accessory recommended by the manufacturer. The camera must be mounted securely to a wall to avoid the camera falling and potentially causing serious damage.
- **Camera Extension Cables** - Check the rating of your extension cable to verify its compliance prior to installation.
- **Mounting** - The cameras provided with this system should be mounted only as instructed in this guide or the instructions that came with your cameras, using the supplied mounting brackets.
- **Camera Installation** - Cameras are not intended for submersion in water. When installing cameras outdoors, installation in a sheltered area is recommended.



## 2. System Requirements

### Web Portal

- Windows® 7
- Mac OS® 10.7
- Chrome™ 24
- Internet Explorer® 9
- Safari® 6
- Java™ 7
- Firefox® 18.0
- Adobe® Flash® Player 15.0

### Android™ System

- Version 4.2 or above

### iPhone®/iPad® iOS

- Version 7.0 or above

### Wi-Fi requirements:

- At least 0.6 Mbps upload bandwidth per camera. Test your Internet speed at: <http://www.speedtest.net/>

## 3. Getting started - Connecting Devices

### How does it work?



When a user tries to access the Camera, our secure server authenticates the user's identity and permits access to the Camera.

### 3.1 Setup

Connect the Camera to the power adapter, then plug into an suitable mains power socket and make sure the power switch is in the ON position. The Camera must be within range of the Wi-Fi<sup>®</sup> router with which you want to connect it to. Make sure the password of the router is available for entering during the in-app setup process.

#### Status of LED Indication:

- Pair / Setup state: LED is red and blue and flashing slowly
- Unconnected state: LED is red and flashing slowly
- Connected state: LED is blue and always on
- Ready for connection state: LED is blue and flashing slowly

**Note:** You can only setup via a compatible smartphone or tablet and not via a PC.

## 3.2 User Account and Camera Setup on Android™ Devices

### *What you need*

- FOCUS73 camera
- FOCUS73 camera power adapter
- Device with Android™ system version 4.2 or above

### 3.2.1 Power On and Connect the FOCUS73 camera

- Connect the FOCUS73 adapter to a suitable mains power socket, insert the power adapter plug into the socket of the Power Cable.
- The camera's green LED blinks after the camera has finished booting.

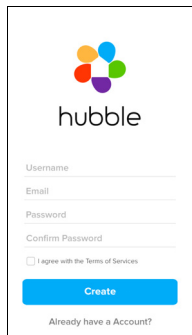
### 3.2.2 Download the Hubble for Motorola Monitors App

- Go to the Google Play™ Store to search “Hubble for Motorola Monitors” application.
- Download the Hubble for Motorola Monitors App from the Google Play™ Store and install it on your Android™ device.

### 3.2.3 Run the Hubble App on Android™ device

- Ensure your Android™ device is connected to your Wi-Fi® router.
- Run Hubble for Motorola Monitors application and key in your Hubble for Motorola Monitors account information, select “I agree to the Terms of Use” before you tap on **Create**. (Picture A1)

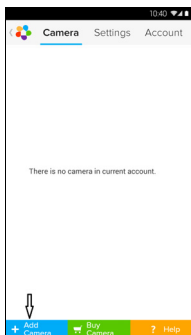
**Note:** If you have a Hubble account, please select **Already have an Account?** to go to the next step.



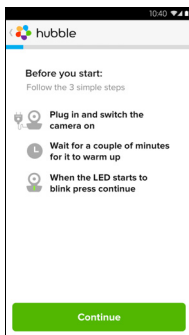
A1

### 3.2.4 Add FOCUS73 Camera to your account

- Once you have created your account and are logged in:
- Tap on **Add Camera**. (Picture A2)
- Tap on **Continue**. (Picture A3)

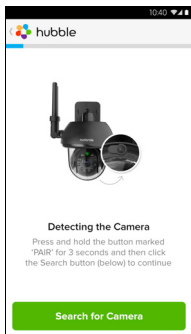


A2



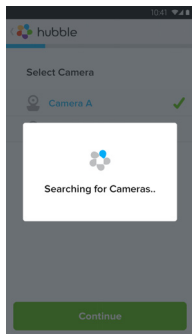
A3

- On the screen, it shows the setup instructions. (Picture A4)

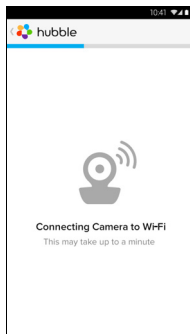


A4

- Press and hold the **PAIR** button for 3 seconds on the side of FOCUS73 camera and the indicator will flash rapidly. Then tap on **Search for Camera**.
- The app will auto-search and connect to your Camera as shown on the pictures below. (Pictures A5, A6)

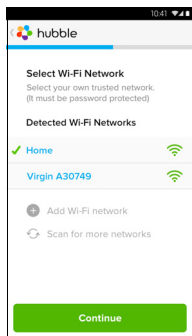


A5

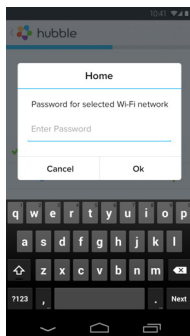


A6

- Select Wi-Fi® Network and tap **Continue**, enter password then tap on **Connect**. (Pictures A7, A8)

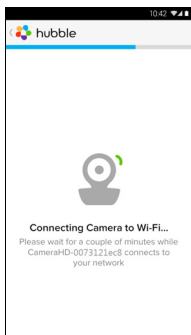


A7

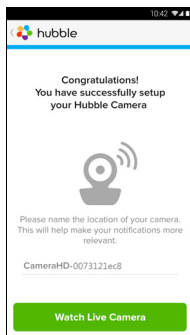


A8

- When the camera is connecting to the Wi-Fi® Network, please wait a few minutes whilst the camera searches for a connection. Once it has finished searching it will display the result of the connection attempt (Picture A9, A10). If the connection has failed, please tap on the **Retry** button and repeat the steps described in 3.2.4

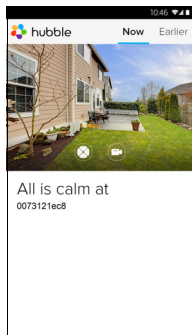


A9

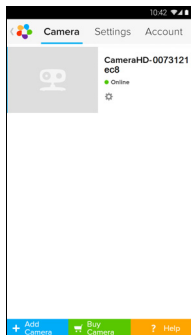


A10

- Tap on **Watch Live Camera** to view camera video and the LED indicator will turn on. (Picture A11)
- Tap on Hubble logo and go back to the camera list. (Picture A12)



A11



A12



### 3.3 User Account and Camera Setup: Working with iPhone®/iPad®

#### *What you need*

- FOCUS73 camera
- FOCUS73 camera power adapter
- iPhone®/iPad® with iOS 7.0 version or newer

#### 3.3.1 Power ON and Connect the FOCUS73 camera

- Connect the FOCUS73 adapter to a suitable mains power socket, insert the plug into the socket of the Power Cable.
- The camera's green LED will blink after the camera has finished booting up; this indicates that the camera is ready to be setup.

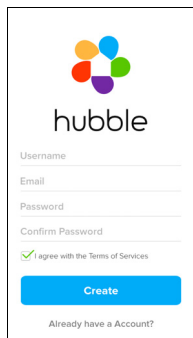
#### 3.3.2 Download the Hubble for Motorola Monitors App

- Go to App Store to search “Hubble for Motorola Monitors”.
- Download Hubble for Motorola Monitors App and install it on your iPhone®/iPad®.

### 3.3.3 Run the Hubble App on your iPhone® /iPad®

- Ensure your iPhone® /iPad® is connected to your Wi-Fi® Router.
- Run Hubble for Motorola Monitors application and key in your Hubble for Motorola Monitors account information, read through the Terms of Service then select “I agree to the Terms of Service” before you tap on **Create**. (Picture i1)

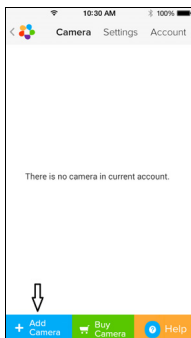
**Note:** If you have a Hubble for Motorola Monitors account, please select **Already have an Account?** to continue to the next steps.



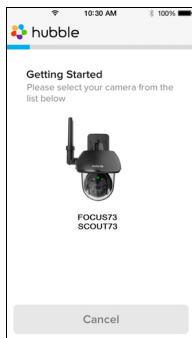
i1

### 3.3.4 Add FOCUS73 Camera to your account

- Once you have created your account and are logged in:
- Tap on **Add Camera**. (Picture i2)
- Tap on “FOCUS73”. (Picture i3)

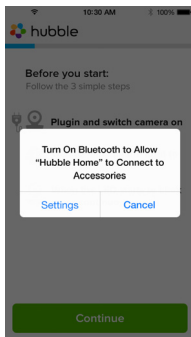


i2



i3

- Follow the instruction on screen to turn on the Bluetooth™ function of your iPhone®/iPad®.



i4

- Tap on Home button, then enter the “Settings” menu to turn on the Bluetooth™ function of your iPhone®/iPad®.

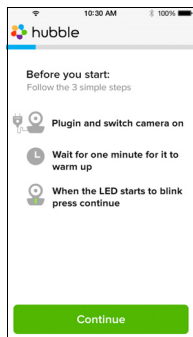


i5



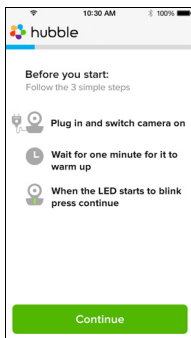
i6

- Press the HOME key to exit the Settings menu and tap on the “Hubble Home” App to enter the start up screen.

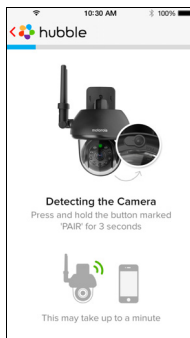


i7

- Tap on **Continue** and follow the steps indicated as shown below. (Pictures i8, i9)

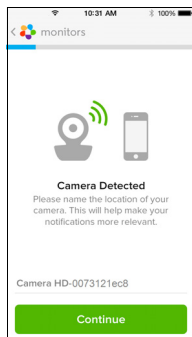


i8



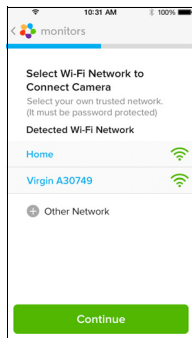
i9

- Follow the steps above to locate the camera with identification number “CameraHD-xxxxxxx”, then tap on **Continue** once your iPhone® or iPad® has connected to the camera. (Picture i10)

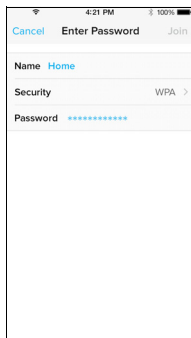


i10

- Select Wi-Fi® Network then tap **Continue**. Then, enter password and tap **Next**. (Pictures i11, i12)

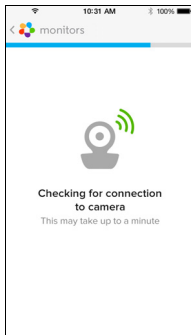


i11

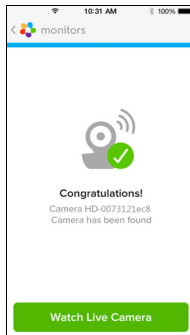


i12

- When the camera is connecting to the Wi-Fi® Network, please wait a few minutes whilst the camera searches for a connection. Once it has finished searching it will display the result of the connection attempt (Picture A9, A10). If the connection has failed, please tap on the **Retry** button and repeat the steps described in 3.3.4

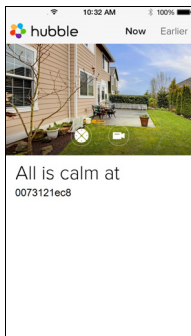


i13

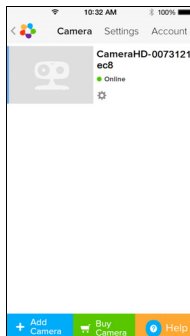


i14

- Press **Watch Live Camera** to view Camera video. (Picture i15)
- Tap on Hubble logo to go back to Camera list. (Picture i16)



i15



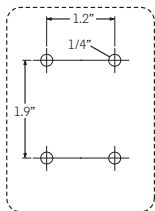
i16

## 4. Camera

### 4.1 Install your Camera and setting up

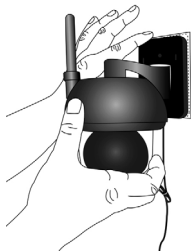
#### A. Fixing Mounting Plate on the wall.

- Mark the position of the screw holes on the wall.
- Drill 4 holes and hammer the drywall plugs (included) into the holes as needed.
- Fasten the mounting plate on the wall with the 4 Philips head screws (provided).



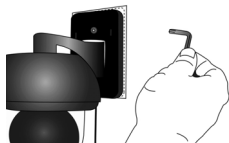
#### B. Hanging the Camera unit on the Mounting Plate.

- Place the 4 mounting slots of the camera base on to 4 catches on the mounting plate.
- Make sure the unit sits firmly on the mounting plate with the center holes of 2 parts lined up.



#### C. Secure the Camera Unit.

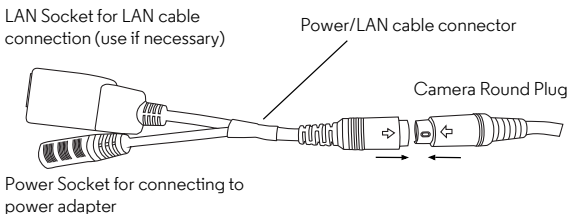
- Fasten the unit to the mounting plate at the center hole with the tamper-proof screw by the wrench key provided.





#### D. Connecting the Camera Unit's Power Supply.

- Connect the camera's round plug to the Y-shaped Power/LAN cable connector.
- Insert the power adapter plug into the Power Socket and connect other end of the power adapter to a suitable mains power socket. (LAN socket provides an option for you to connect via LAN cable if it is necessary)
- The LED indicator will light up.

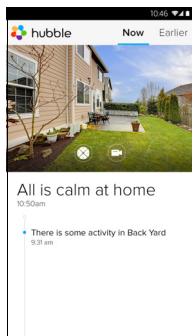


## 4.2 Camera Functions: Working with devices for Android™

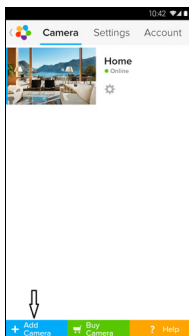
- Run the Hubble for Motorola Monitors application on your Android™ device.
- The Camera view appears on the screen.

### 4.2.1 Add more cameras

- On Camera view, tap on Hubble logo to go to **Add Camera** page. (Picture A13)
- Tap on **Add Camera** to add one more camera follow steps of Android™ device setup Section 3.2.4. (Picture A14)
- Once the Camera has been added, the Camera view will be automatically displayed.




A13

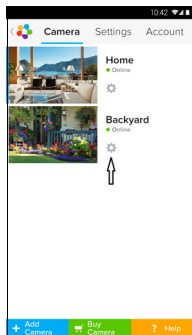


A14

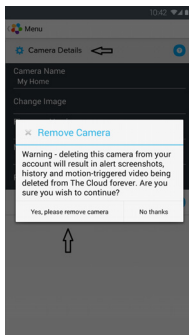
## 4.2.2 Remove a camera

You can remove a camera from your account by following these steps:

- Tap the Setting icon  on General page, then tap on **Camera Details**. (Picture A15)
- Select **Remove Camera** and tap on **Yes** to delete the unit from camera list. (Picture A16)



A15

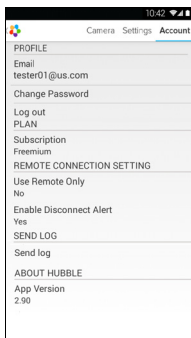


A16

### 4.2.3 Change your Account Information


You can change the account information using Android™ device.

- Tap **Account** on General page, the account setting appears on screen. (Picture A17)
- Tap on **Change Password** to change your password following the instruction.
- Tap on **Log Out** to leave the account.
- Tap on **Freemium** plan, it will go to the link of Cloud Video Recording Service, to obtain more information, please visit our website <http://www.hubbleconnected.com>.
- Tap on **Use Remote Only** to access Remote Connection Setting, confirm Use by Selecting **Yes**.
- **Enable Disconnect Alert** , when disconnect it will be "beeps" alert,enable the disconnect Alert by selecting **Yes**.
- Tap on **Send Log** to send your Hubble for Motorola Monitors Android App report to our server via e-mail; this should be sent if requested by a customer service agent.

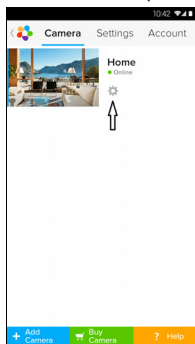


A17

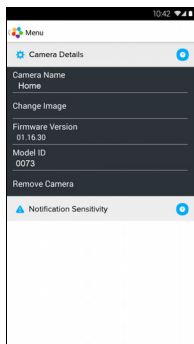
## 4.2.4 Camera settings

You can change the Camera settings by tapping the Setting icon  on the Camera list page. (Picture A18)

- Tap on **Camera Details** to review **Camera Name**, **Change Image** & **Firmware version**. (Picture A19)

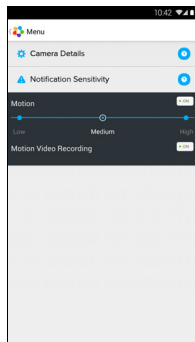


A18



A19

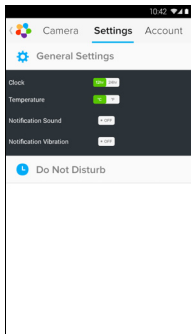
- Tap on **Notification Sensitivity** to set the sensitivity of motion detection. (Picture A20)



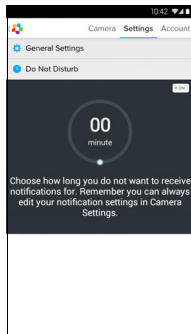
A20

## 4.2.5 General setting

- Tap **Settings** on General page.
- Tap on **General Settings** to shift the format of **Clock** (12hr/24hr). (Picture A21)



A21



A22

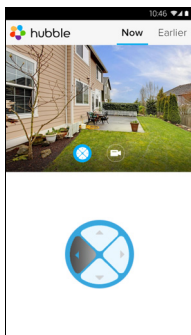
- Tap on **Do Not Disturb**, set the timer which you prefer and select **ON**, the Camera will not send any alert to your Android™ device in the duration of your setting. (Picture A22)

## 4.2.6 Features of the Hubble App

On Camera view, tap the viewing area, Function Icons will appear as following,

### Pan and Tilt Function:


Tap the up and down buttons to tilt, the left and right buttons to pan. (Picture A23)

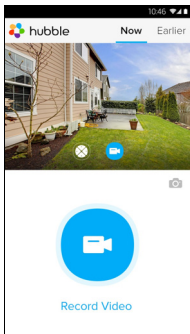


A23

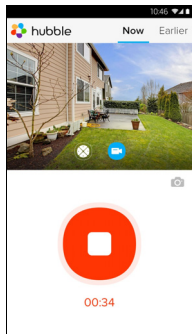
 **Photo/Video** - Take a photo or record a video from your Camera.

Tap Video icon to activate the video function and press the red dot to start and release to stop recording. (Pictures A24, A25)

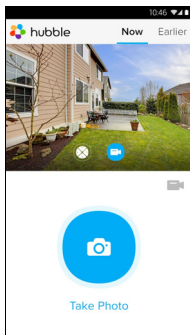
Tap Camera icon  to switch to Camera mode, you can capture photos from camera view. (Picture A26)



A24



A25



A26

**Note:**

*Photos and videos will be stored on the internal flash memory of your Android™ device, and can be accessed via the Gallery or Media Player. To play videos, please use the “Hubble for Motorola Monitors” application or a 3rd party application, such as MX player (i.e. Google Play™ Store), which is able to play MJPG (Motionjpeg).*

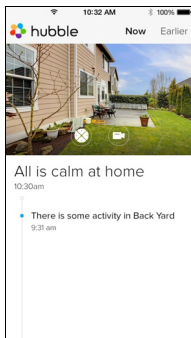


## 4.3 Camera Functions: Working with devices for iPhone®/iPad®

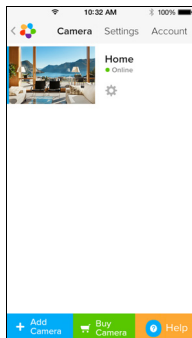
- Run the Hubble for Motorola Monitors application on your iPhone®/iPad®.
- The Camera view appears on the screen.

### 4.3.1 Add more cameras

- On Camera view, tap on the Motorola logo to go to **Add Camera** page. (Picture i17)
- Tap on **Add Camera** to add one more camera follow steps of iPhone®/iPad® setup Section 3.3.4. (Picture i18)
- Once the Camera has been added, the Camera view will be automatically displayed.



i17




i18

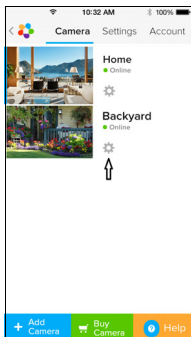
#### **Note:**

You can **ONLY** add up to 4 cameras in one account.

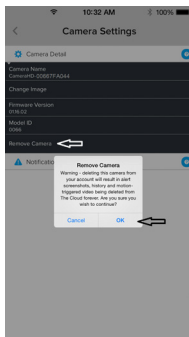
## 4.3.2 Remove a camera

You can remove a camera from your account by following these steps:

- Tap the Setting icon  on General page, then tap on **Camera Details**. (Picture i19)
- Select **Remove Camera** and tap on **Yes** to delete the unit from camera list. (Picture i20)



i19

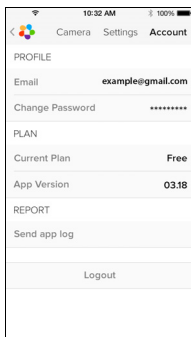


i20

### 4.3.3 Change your Account Information


You can change the account information using iPhone®/iPad®.

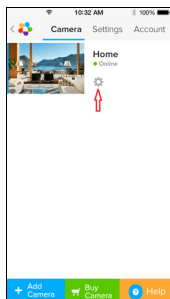
- Tap **Account** on General page, the account setting appears on screen. (Picture i21)
- Tap on **Change Password** to change your password following the instruction.
- Tap on **Log Out** to leave the account.
- Tap on **Current plan**, it will go to the link of Cloud Video Recording Service, to obtain more information, please visit our website [www.hubbleconnected.com/motorola/plans](http://www.hubbleconnected.com/motorola/plans).
- Tap on **Send app log** to send your Hubble for Motorola Monitors App report to our server via e-mail; this should be sent if requested by a customer service agent.



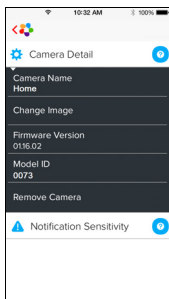
i21

### 4.3.4 Camera settings

You can change the Camera settings by tapping on the Setting icon  on the General page (Picture i22). Here you can review the **Camera Name** and **Firmware version** (Picture i23). Additionally you are allowed to change camera name by tapping on the existing camera name and following the instructions.



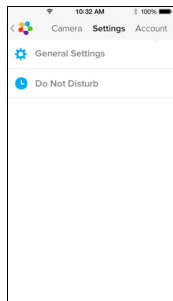
i22



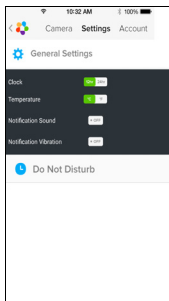
i23

### 4.3.5 General settings

- Tap **Settings** on General page. (Picture i24)
- Tap on **General Settings** to shift the format of **Clock** (12hr/24hr). (Picture i25)

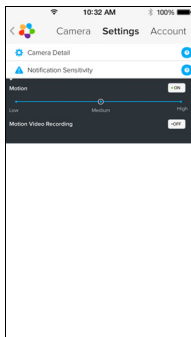


i24

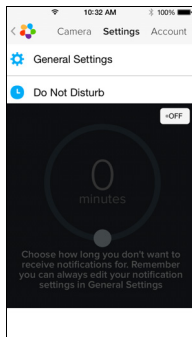


i25

- Tap on **Notification Sensitivity** to set motion detection. (Picture i26)



i26

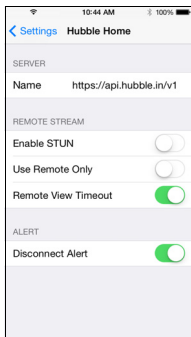


i27

- Tap on **Do Not Disturb**, set the timer which you prefer and select **ON**, the Camera will not send any sound or alert to your iPhone®/iPad® in the duration of your setting. (Picture i27)

### 4.3.6 Hubble for Motorola Monitors Settings

- Tap on **Settings** on your iPhone<sup>®</sup>/iPad<sup>®</sup>, and the applications will appear, tap on Hubble for Motorola Monitors App  hubble, the settings in the Hubble for Motorola Monitors app will be shown on screen. (Picture i28)



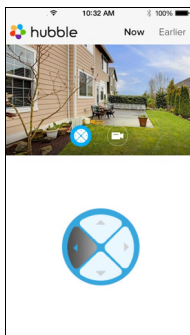
i28

### 4.3.7 Features of the Hubble App

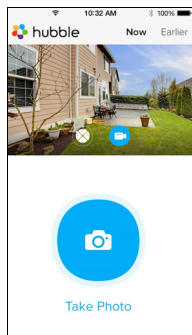
On Camera view, tap the viewing area, Function Icons will appear as following,

#### Pan and Tilt Function:



Tap the up and down buttons to tilt, the left and right buttons to pan. (Picture i29)



i29



i30

 **Image Snapshot** - Tap Camera icon  to capture photos from camera view. (Picture i30)

#### **Note:**

*Photos will be stored on the internal flash memory of your iPhone®/iPad®.*



## 4.4 Camera Functions: Working with PC/Notebook

- Go to URL: <https://app.hubbleconnected.com/#login>
- Enter your User Name and Password and then click Login if you have already created an account.
- Click on the Camera list paired in your account via Android™ device or iPhone®/iPad®, and the Camera view will appear on screen. You can easily stay connected with your favorite people, places and pets with live video streaming.
- On the website, you can change the settings by following the Menu instruction steps.



## 5. Procedure for resetting the Camera

**Note:** If your Camera is moved from one router (e.g. home) to another router (e.g. office) or you have Camera setup issues, then this Camera must be reset again. Please reset the Camera with the following procedure:

1. Unplug the Power Adapter.
2. Press and hold the PAIR button on the underside of the Camera, then plug the Power Adapter to the mains power socket, the LED indicator turns ON.
3. Release the PAIR button and wait for the Camera to complete the internal reset procedure, the LED indicator will turn Off.
4. You can add your camera again by following the steps 3.2.4 for Android device or 3.3.4 of iOS device.

## 6. Help

### Noise interference

To avoid background noise or echoes, ensure that there is enough distance between your device and the Wi-Fi® Camera Unit.

Use of other 2.4 GHz products, such as Bluetooth™ systems or microwave ovens, may cause interference with this product. Keep the Wi-Fi® Camera Unit at least 1.5m away from these types of products, or turn them off if they appear to be causing interference.

### Lost connection

Check your Wi-Fi® settings. If necessary reconnect your Wi-Fi®. Ensure the Wi-Fi® Camera Unit is switched ON. Wait a few minutes to make the connection with the Wi-Fi® system.

### If you forgot your password

If you do not remember your password, tap **Forgot password** and submit your e-mail address. A new password will be sent to your e-mail address immediately.

### Trouble Shooting

Category	Problem Description / Error	Solution
Account	I am unable to login even after registration.	Please check your user name and password.
Account	I receive an error message saying: "Email ID is not registered".	Please ensure that you have registered with us. Tap <b>Create Account</b> to create an account to be able to use the Wi-Fi® Home Video Camera.



Account	What do I do if I forgot my password?	Click on the "Forgot Password" link on the <a href="https://app.hubbleconnected.com/#lostpassword">https://app.hubbleconnected.com/#lostpassword</a> website OR your Android™ or iOS application. An email will be sent to your registered email address.
Account	I am unable to receive a new password although I have used the "Forgot password" option.	<ol style="list-style-type: none"><li>1. The e-mail might have been sent to your Junk Mail Folder. Please check your Junk Mail Folder.</li><li>2. There might be a delay in getting your e-mail. Please wait a few minutes and refresh your email account.</li></ol>
Connectivity Issues	I get a message: We are having problems accessing your camera. This could be due to lack of internet connection. Please wait and try again later.	<ol style="list-style-type: none"><li>1. Please try again in a few minutes. This could be because of any issue with your internet connection.</li><li>2. If the problem remains, please restart your Camera to check if this fixes the problem.</li><li>3. Please restart your Wireless Router.</li></ol>
Viewing Camera	When I am in "remote mode", the video stops after 5 minutes. How do I view for longer?	When you are accessing your Camera via a network different from your home network (over internet) your video times out after 5 minutes. You can click on the Camera again from the Android™/iOS application to start streaming again. If you are accessing from your web-browser, then you can press on the <b>Reload</b> button to start viewing your Camera video stream again.



Connectivity Issues	My Phone application displays the following message: "Unable to connect to BMS server".	<ol style="list-style-type: none"><li>1. Check the Wi-Fi® network strength.</li><li>2. Check if you are connected to the internet by starting the phone browser and going to a website like <a href="http://www.google.com">www.google.com</a>.</li><li>3. Try again if you are successful connecting to the internet.</li><li>4. Plug the LAN wire into RJ45 socket directly and connect to the internet in case the Wi-Fi® signal is not good.</li></ol>
Setting Up	While I am adding a new camera to my account, I am not able to find any Cameras to add.	If you are trying to add a Camera which has previously been added into your account or another account, you will first have to reset the Camera. This can be done by pressing and holding the PAIR button at the bottom of the Camera for 5 seconds.
General	What are the supported browsers for accessing from my PC/Mac?	On PC and Mac, we recommend to use Google Chrome™. However the following browsers are also supported: PC: Internet Explorer® 9 and above. Mac: Safari® 6.

General	What is the significance of LED flashing?	<p>A blinking LED indicates the following status:</p> <p><u>Rapid blinking:</u> 1. Your Camera is in setup mode. You can add the Camera to your account in this mode. Out of the box, the Camera is in setup mode. To reset to setup mode, press and hold the PAIR button on the bottom of the Camera until the LED indicator flashes rapidly.</p> <p><u>Slow blinking:</u> 2. The Camera is either connecting to the router or lost the link to the router. Please ensure that the Camera is in the Wi-Fi® signal range.</p> <p><u>LED is stable:</u> The Camera is connected to the Wi-Fi® network.</p>
Connectivity Issues	I am not able to access my Camera.	Please check if the Camera is within Wi-Fi® range. If the LED on your Camera is slow blinking, please try to move the Camera closer to the router for better Wi-Fi® range and try again.
Setting Up	During setup on device for Android™ and iOS, during the last step I am not able to find my Camera and the setup fails.	Please reset the Camera to setup mode and try again. Press and hold the PAIR button on the bottom of the Camera until you hear a beep. The LED indicator flashes rapidly, indicating that it is in setup mode. Now restart the setup from your Smartphone again.



Connectivity Issues	Even though I am accessing my Camera from the same Wi-Fi® network, I still find my Camera is shown as remote. I can only access it for 5 minutes at a time.	Please check your wireless router settings. For example, in Buffalo brand routers there is an option called Wireless Isolation. Please disable this option.
Camera	When I try to view the Camera, I get a prompt for Camera firmware upgrade. What should I do?	Please upgrade your firmware. This takes around 5 minutes. We push upgrades from time to time to improve the Camera features.
General	Which platforms are supported for accessing my Camera?	Windows® 7*, Windows® 8* *Java browser plug-in needed Mac OS® version 10.7 or above Internet Explorer® version 9.0 or above Firefox® version 18.0 or above Chrome™ version 24.0 or above Safari® version 6.0 or above Java™ version 7 or above Android™ version 4.2 or above iPhone® /iPad® iOS version 7.0 or above.
General	What is the meaning of "Local Camera" and "Remote Camera"?	When you are accessing your camera from the same wireless network (Home) in which it is configured, it is a local camera. When you are accessing your Camera away from your home it is a remote camera. You may be using 3G, 4G or 4G LTE or a Wi-Fi® connection outside of your home.

<p>General</p>	<p>How do I download the APP for Android™ and iOS devices?</p>	<p><b>Android™:</b></p> <ul style="list-style-type: none"> <li>- Open Google Play App on your Android™ device</li> <li>- Select Search</li> <li>- Type "Hubble for Motorola Monitors"</li> <li>- The results will have Hubble for Motorola Monitors App by Binatone</li> <li>- Select to install it</li> </ul> <p><b>iOS Device:</b></p> <ul style="list-style-type: none"> <li>- Open iOS APP Store™</li> <li>- Select search</li> <li>- Type "Hubble for Motorola Monitors"</li> <li>- The results will have Hubble for Motorola Monitors App by Binatone</li> <li>- Select to install it</li> </ul>
<p>Setting up</p>	<p>When the video is cut off, the application attempts to reconnect and results in lost sound and choppy video.</p>	<p>You will need to turn off the auto lock function of your smart device to ensure continuous video/audio feeding.</p>
<p>Features</p>	<p>How many users can access the Camera at one time?</p>	<p>If you are accessing in local more, two users are supported, after two users all streaming will go through remote server. This allows for unlimited user access to a single Camera at one time.</p>



---

Connectivity issues	I found interference caused by my other web cam devices.	Video streaming performance is related to internet bandwidth, especially if you have 2 or more video streaming devices that are working through the same router.
---------------------	--	--



## 7. General Information

If your product is not working properly....

1. Read this User's Guide.
2. Contact Customer Service at:  
+44 (0) 844 557 0890 (UK only)  
+44 (0) 8187 62092 (ROI)

### Consumer Products and Accessories Limited Warranty ("Warranty")

Thank you for purchasing this Motorola branded product manufactured under license by Binatone Electronics International LTD ("BINATONE").

#### ***What Does this Warranty Cover?***

Subject to the exclusions contained below, BINATONE warrants that this Motorola branded product ("Product") or certified accessory ("Accessory") sold for use with this product that it manufactured to be free from defects in materials and workmanship under normal consumer usage for the period outlined below. This Warranty is your exclusive warranty and is not transferable.

#### ***Who is covered?***

This Warranty extends only to the first consumer purchaser, and is not transferable.

#### ***What will BINATONE do?***

BINATONE or its authorised distributor at its option and within a commercially reasonable time, will at no charge repair or replace any Products or Accessories that does not conform to this Warranty. We may use functionally equivalent reconditioned/ refurbished/ pre-owned or new Products, Accessories or parts.

### ***What Other Limitations Are There?***

ANY IMPLIED WARRANTIES, INCLUDING WITHOUT LIMITATION THE IMPLIED WARRANTIES OF MERCHANTABILITY AND FITNESS FOR A PARTICULAR PURPOSE, SHALL BE LIMITED TO THE DURATION OF THIS LIMITED WARRANTY, OTHERWISE THE REPAIR OR REPLACEMENT PROVIDED UNDER THIS EXPRESS LIMITED WARRANTY IS THE EXCLUSIVE REMEDY OF THE CONSUMER, AND IS PROVIDED IN LIEU OF ALL OTHER WARRANTIES, EXPRESS OR IMPLIED. IN NO EVENT SHALL MOTOROLA OR BINATONE BE LIABLE, WHETHER IN CONTRACT OR TORT (INCLUDING NEGLIGENCE) FOR DAMAGES IN EXCESS OF THE PURCHASE PRICE OF THE PRODUCT OR ACCESSORY, OR FOR ANY INDIRECT, INCIDENTAL, SPECIAL OR CONSEQUENTIAL DAMAGES OF ANY KIND, OR LOSS OF REVENUE OR PROFITS, LOSS OF BUSINESS, LOSS OF INFORMATION OR OTHER FINANCIAL LOSS ARISING OUT OF OR IN CONNECTION WITH THE ABILITY OR INABILITY TO USE THE PRODUCTS OR ACCESSORIES TO THE FULL EXTENT THESE DAMAGES MAY BE DISCLAIMED BY LAW.

Some jurisdictions do not allow the limitation or exclusion of incidental or consequential damages, or limitation on the length of an implied warranty, so the above limitations or exclusions may not apply to you. This Warranty gives you specific legal rights, and you may also have other rights that vary from one jurisdiction to another.

Products Covered	Length of Coverage
Consumer Products	<b>One (1) year</b> from the date of the products original purchase by the first consumer purchaser of the product.
Consumer Accessories	<b>Ninety (90) days</b> from the date of the accessories original purchase by the first consumer purchaser of the product.
Consumer Products and Accessories that are Repaired or Replaced	<b>The balance of the original warranty or for Ninety (90) days</b> from the date returned to the consumer, whichever is longer.

## Exclusions

**Normal Wear and Tear.** Periodic maintenance, repair and replacement of parts due to normal wear and tear are excluded from coverage.

**Batteries.** Only batteries whose fully charged capacity falls below 80% of their rated capacity and batteries that leak are covered by this Warranty.

**Abuse & Misuse.** Defects or damage that result from: (a) improper operation, storage, misuse or abuse, accident or neglect, such as physical damage (cracks, scratches, etc.) to the surface of the product resulting from misuse; (b) contact with liquid, water, rain, extreme humidity or heavy perspiration, sand, dirt or the like, extreme heat, or food; (c) use of the Products or Accessories for commercial purposes or subjecting the Product or Accessory to abnormal usage or conditions; or (d) other acts which are not the fault of MOTOROLA or BINATONE, are excluded from coverage.

**Use of Non-Motorola branded Products and Accessories.** Defects or damage that result from the use of Non-Motorola branded or certified Products or Accessories or other peripheral equipment are excluded from coverage.

**Unauthorised Service or Modification.** Defects or damages resulting from service, testing, adjustment, installation, maintenance, alteration, or modification in any way by someone other than MOTOROLA, BINATONE or its authorised service centres, are excluded from coverage.

**Altered Products.** Products or Accessories with (a) serial numbers or date tags that have been removed, altered or obliterated; (b) broken seals or that show evidence of tampering; (c) mismatched board serial numbers; or (d) nonconforming or non-Motorola branded housings, or parts, are excluded from coverage.

**Communication Services.** Defects, damages, or the failure of Products or Accessories due to any communication service or signal you may subscribe to or use with the Products or Accessories is excluded from coverage.

### ***How to Obtain Warranty Service or Other Information?***

To obtain service or information, please call:

+44 (0) 844 557 0890 (UK only)

+44 (0) 8187 62092 (ROI)

You will receive instructions on how to ship the Products or Accessories at your expense and risk, to a BINATONE Authorised Repair Centre.

To obtain service, you must include: (a) the Product or Accessory; (b) the original proof of purchase (receipt) which includes the date, place and seller of the Product; (c) if a warranty card was included in your box, a completed warranty card showing the serial number of the Product; (d) a written description of the problem; and, most importantly; (e) your address and telephone number.

These terms and conditions constitute the complete warranty agreement between you and BINATONE regarding the Products or Accessories purchased by you, and supersede any prior agreement or representations, including representations made in any literature publications or promotional materials issued by BINATONE or representations made by any agent employee or staff of BINATONE, that may have been made in connection with the said purchase.

**BINATONE TELECOM PLC**

1 Apsley Way London NW2 7HF, United Kingdom.  
 Tel: +44(0) 20 8955 2700 Fax: +44(0) 20 8344 8877  
 e-mail: binatoneuk@binatone telecom.co.uk

**EC Declaration of Conformity**

We the manufacturer / Importer : Binatone Telecom Plc  
 1 Apsley Way London  
 NW2 7HF, United Kingdom.

Declare under our sole responsibility that the following products

<u>Type of equipment:</u>	<u>Wi-Fi Video Camera</u>
<u>Model Name:</u>	<u>FOCUS73, FOCUS73-2, SCOUT73, SCOUT73-2</u>
<u>Country of Origin:</u>	<u>China</u>
<u>Brand:</u>	<u>Motorola</u>

complies with the essential protection requirements of R&TTE Directive 1999/5/EC on the approximation of the laws of the Member States relating to **Radio Spectrum Matters**, the Council Directive 2004/108/EC on the approximation of the laws of the Member States relating to **electromagnetic compatibility (EMC)** and the European Community Directive 2006/95/EC relating to **Electrical Safety**. Directive 2011/65/EC on the restriction of use of hazardous substances (RoHS) and 2009/125/EC relating to ecodesign requirement for Energy-Related Products (ErP).

Assessment of compliance of the product with the requirements relating to the essential requirements according to Article 3 R&TTE was based on Annex III of the Directive 1999/5/EC and the following standard:

Radio Spectrum:	EN300328 V1.8.1:2012
EMC:	EN301489-17 V2.2.1:2012 EN301489-1 V1.9.2:2011
Electrical Safety:	IEC 60950-1:2005 (Second Edition) + Am 1:2009 + Am 2:2013
RF Safety:	EN 62311:2010

The product is labelled with the European Approval Marking CE as show. Any Unauthorised modification of the product voids this Declaration.



Manufacturer / Importer  
 (Signature of authorised person)

London, 8 July, 2014

Karl Heinz Mueller / Chief Technical Officer

Place & Date

---

## 8. Technical Specifications

### Camera Unit

---

Wi-Fi®	802.11 b/g/n
Image sensor	Colour CMOS 1M Pixels
Lens	f = 2.3 mm, F = 2.4
IR LED	8 pcs
Power Adapter	Zhongshan Baolijin Electronic Co.,Ltd. Input: 100-240V AC, 50/60Hz, 300mA Output: 5V DC, 2000mA
Water Resistance	IP64

---



Manufactured, distributed or sold by Binatone Electronics International LTD., official licensee for this product. MOTOROLA and the Stylized M logo are trademarks or registered trademarks of Motorola Trademark Holdings, LLC. and are used under license. Apple logo and Safari are trademarks of Apple Inc., registered in the U.S. and other countries. App Store is a service mark of Apple Inc. Google Play, Android, and Chrome are trademarks of Google Inc. Wi-Fi is a trademark of the Wi-Fi Alliance. Internet Explorer and Windows are trademarks of the Microsoft group of companies. Firefox is a registered trademark of the Mozilla Foundation. Adobe and Flash are either registered trademarks or trademarks of Adobe Systems Incorporated. Java is a registered trademark of Oracle and/or its affiliates. All other trademarks are the property of their respective owners.  
© 2015 Motorola Mobility LLC. All rights reserved.



EN\_UK Version 16.0  
Printed in China