



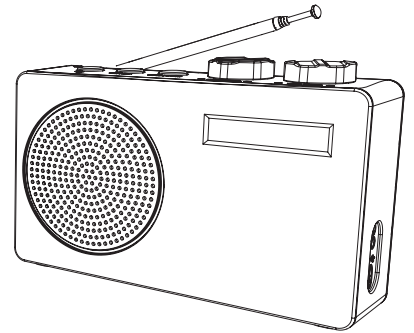
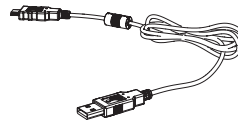
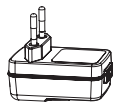
- EN For more information see www.nikkei.eu
- NL Voor meer informatie zie www.nikkei.eu
- D Für weitere Informationen siehe www.nikkei.eu
- F Pour plus d'informations, veuillez consulter le site www.nikkei.eu
- E Para más información, visite www.nikkei.eu
- DK For mere information besøg www.nikkei.eu
- FI Lisätietoja löydät osoitteesta www.nikkei.eu



Check the contents

1

Controleer de inhoud
Kontrollieren Sie den Inhalt
Vérifiez le contenu
Revise el contenido
Kontroller indholdet
Tarkista sisältö



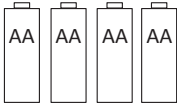
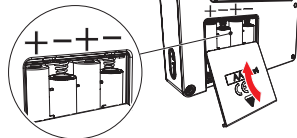
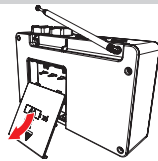
Insert the batteries

OR

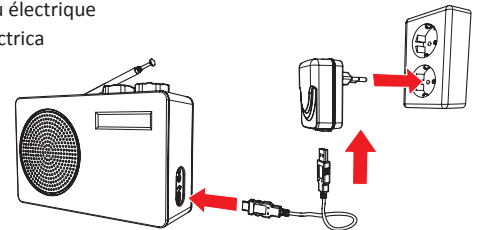
Connect to the mains

2

Plaats de batterijen
Legen Sie die Batterien ein
Placez les piles
Coloque las pilas
Sæt batteriet i
Paristojen asettaminen



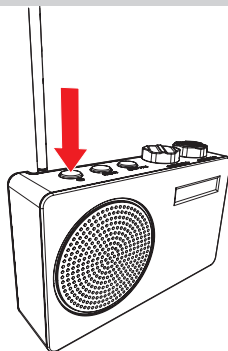
Sluit op het lichtnet aan
Schließen Sie Netzspannung an
Raccordez au réseau électrique
Conecte a la red eléctrica
Tilslut til lysnettet
Kytke verkkovirtaan



Switch on the NDB10

3

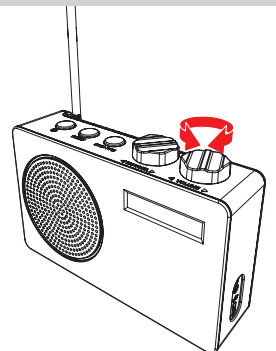
Zet de NDB10 aan
Schalten Sie das NDB10 ein
Mettez l'NDB10 en service
Encienda el NDB10
Slut NDB10 til
Kytke NDB10 päälle



Adjust the volume

4

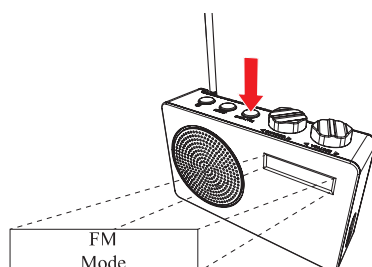
Pas het volume aan
Passen Sie die Lautstärke an
Réglez le volume
Ajuste el volumen
Indstil volumen
Säädä äänenvoimakkuutta



Select FM mode

5

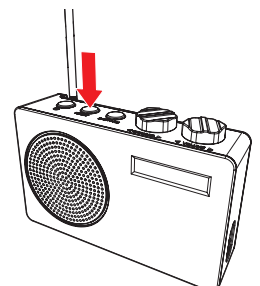
Selecteer de FM-modus
Wählen Sie den FM-Modus aus
Sélectionnez le mode FM
Selección de modo FM
Vælg FM-modus
Valitse FM-tila



Automatically adjust the frequency

6

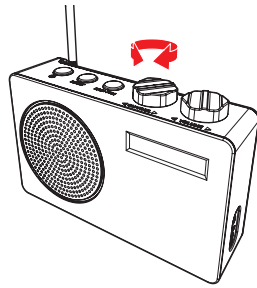
Pas automatisch de frequentie aan
Ändern Sie die Frequenz automatisch
Adaptez la fréquence automatiquement
Ajuste automático de frecuencia
Indstil frekvensen automatisk
Säädä taajuus automaattisesti



7

Adjust the frequency manually

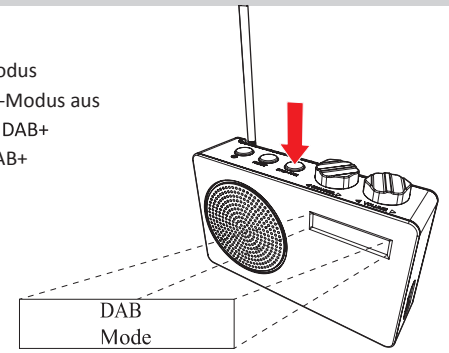
Handmatig frequentie aanpassen
 Freqüenz manuell anpassen
 Régler manuellement la fréquence
 Ajustar frecuencia manualmente
 Frekvensen justeres manuelt
 Säädä taajuus käsin



8

Select DAB+ mode

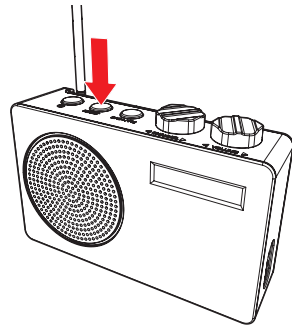
Selecteer de DAB+-modus
 Wählen Sie den DAB+-Modus aus
 Sélectionnez le mode DAB+
 Selección de modo DAB+
 Vælg DAB+-modus
 Valitse DAB+-tila



9

Scan for DAB Stations

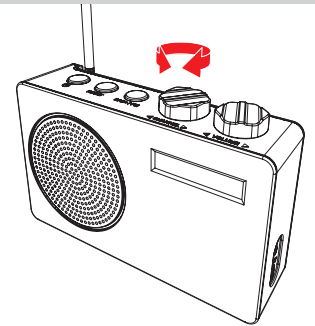
Scan voor DAB Stations
 Nach DAB Stationen suchen
 Recherchez les stations DAB
 Detectar emisoras DAB
 Scan efter DAB-stationer
 Etsi DAB-asemia



10

Choose a radiostation

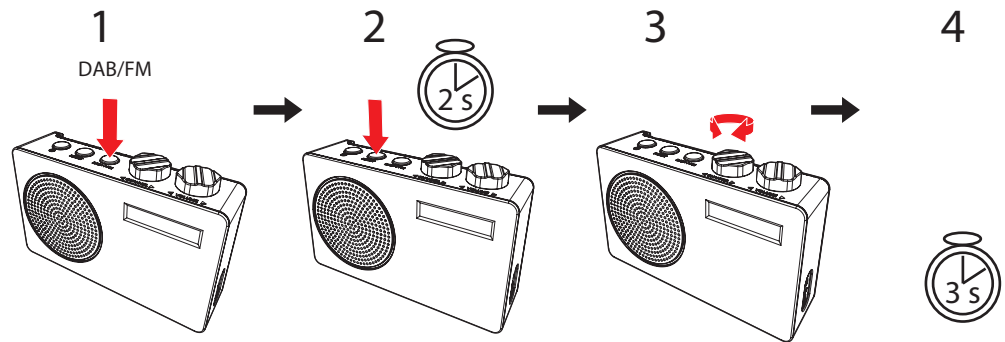
Kies een radiostation
 Radiostation wählen
 Choisissez une station radio
 Elegir una emisora de radio
 Vælg en radiostation
 Valitse radioasema



11

Change settings

Instellingen aanpassen
 Einstellungen anpassen
 Modifier les réglages
 Modificar ajustes
 Indstillingerne justeres
 Muuta asetuksia



12

FM settings

FM Scan setting	All stations/ Strong stations	
FM Audio setting	All stations/ Strong stations	
FM System	System Backlight	on / 10 / 20 / 30 / 45 / 60 / 90 / 120 / 180
	System Language	English / Français / Deutsch
	System Factory reset	Yes / no
	System SW Version	
FM Info	DLS / Time / Battery Level / Stereo / Mono / PS / PTY / Radio Text / Signal Quality	

13

DAB settings

DAB Full scan		
DAB Manual tune		
DAB DRC	Off / low / high	
DAB Prune	Yes / no	
DAB System	DAB Backlight	on / 10 / 20 / 30 / 45 / 60 / 90 / 120 / 180
	DAB Language	English / Français / Deutsch
	DAB Factory reset	Yes / no
	DAB SW Version	
DAB Info	DLS / Date / Time / Battery Level / Bitrate Codec / Signal Quality / Frequency / Ensemble / PTY / Signal Strength	

Specifications Specificaties Technische Daten Spécifications Especificaciones Specifikationer Tekniset tiedot

Earphone jack: 3,5 mm Frequency range: FM: 87.5-108MHz DAB+: 174-240MHz LCD Display: High resolution display Power supply: AC Power input 4 x 1,5V Battery DC adapter power input 100-240V, 50-60Hz Please use our provided adapter Dimensions: 155mm x 110mm x 47mm	Koptelefoon aansluiting: 3,5mm Frequentiegebied: FM: 87.5-108MHz DAB+: 174-240MHz LCD display: Hoge resolutie display Stroomvoeding: AC: 4 x 1,5V batterij DC: 100-240V, 50-60Hz Gebruik hiervoor de meege- leverde adapter Afmetingen: 155mm x 110mm x 47mm	Kopfhöreranschluss: 3,5mm Frequenzbereich: FM: 87.5-108MHz DAB+: 174-240MHz LCD-Display: Display mit hoher Auflösung Stromzufuhr: AC: 4 x 1,5V Batterie: DC: 100-240V, 50-60Hz Hierfür den mitgelieferten Adapter verwenden Abmessungen: 155mm x 110mm x 47mm	Prise écouteur: 3,5mm Plage de fréquence: FM: 87.5-108MHz DAB+: 174-240MHz Affichage LCD: Écran haute résolution Alimentation électrique : AC: 4 x 1,5V Batterie DC: 100-240V, 50-60Hz Utilisez l'adaptateur fourni Dimensions : 155mm x 110mm x 47mm	Conector de auriculares: 3,5mm Intervalo de frecuencia: FM: 87.5-108MHz DAB+: 174-240MHz Pantalla LCD: Pantalla de alta resolución Fuente de alimentación: AC: 4 x 1,5V Batería DC: 100-240V, 50-60Hz Utilice el adaptador sumi- nistrado Dimensiones: 155mm x 110mm x 47mm	Tilslutning til hovedtelefon: 3,5mm Frekvensområde: FM: 87.5-108MHz DAB+: 174-240MHz LCD-display: Skærm med høj opløsning Strømforsyning: AC: 4 x 1,5V Batteriet DC: 100-240V, 50-60Hz Brug den medfølgende adapt- er til at gøre dette Dimensioner: 155mm x 110mm x 47mm	Kuulokeliitäntä: 3,5mm Taajuusalue: FM: 87.5-108MHz DAB+: 174-240MHz Nestekidenäyttö: Teräväpiirtonäyttö Syöttövirta: AC: 4 x 1,5V Paristo DC: 100-240V, 50-60Hz Käytä mukana toimitettua sovitinta Mitat: 155mm x 110mm x 47mm
--	---	---	--	--	--	---