

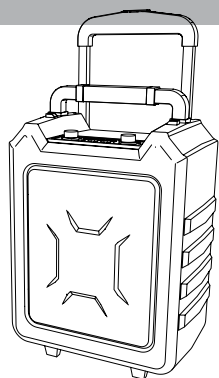


OPK3040BT
Trolleyspeaker



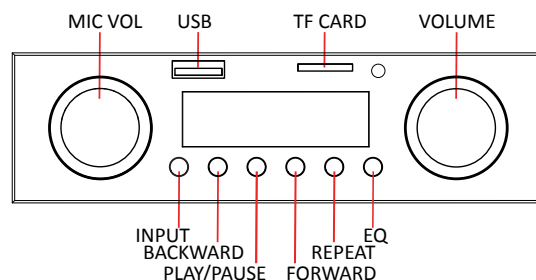
1 Check the contents

Controleer de inhoud
Kontrollieren Sie den Inhalt
Vérifiez le contenu
Revise el contenido
Kontroller indholdet
Tarkista sisältö



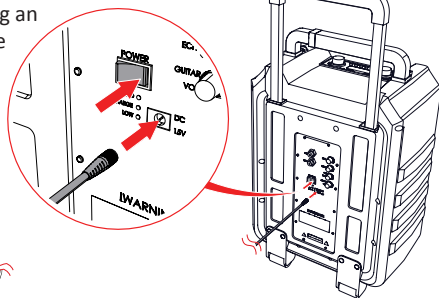
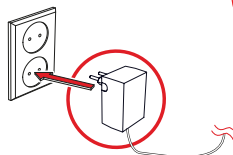
2 The buttons

De knoppen
Die tasten
Les boutons
Los botones
Los botones
Knapperne
Painikkeet



3 Connect to the mains

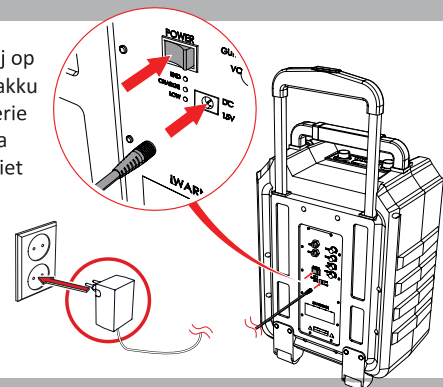
Sluit op het lichtnet aan
Schließen Sie die Netzspannung an
Raccordez au réseau électrique
Conecte a la red eléctrica
Tilslut til lysnettet
Kytke verkkovirtaan



OR

Charge the battery

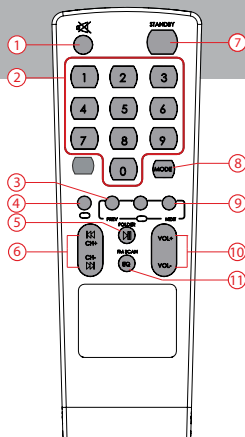
Laad de batterij op
Laden sie den akku
Charge la batterie
Carga la batería
Oplader batteriet
Lataa akun



4 Remote control

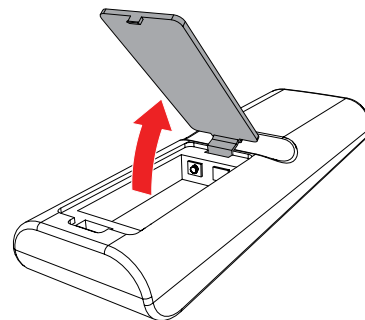
Afstandsbediening
Fernbedienung
Télécommande
Mando a distancia
Fjernbetjening
Kaukosäädin

- | | |
|-------------------------------|-------------------------|
| 1. MUTE button | 7. ON/STANDBY button |
| 2. Digit buttons | 8. MODE button |
| 3. PREV button | 9. NEXT button |
| 4. REPEAT button | 10. VOLUME +/- buttons |
| 5. PLAY/PAUSE button (folder) | 11. EQ button (FM SCAN) |
| 6. CHANNEL +/- button | |



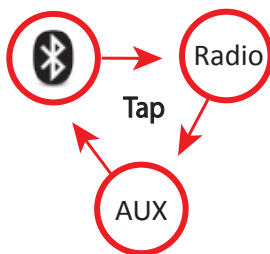
5 Insert the batteries

Plaats de batterijen
Legen Sie die Batterien ein
Placez les piles
Coloque las pilas
Sæt batteriet i
Paristojen asettaminen



6 The button INPUT

De invoer toets
Die taste input
La touche input
La tecla input
Knapperne input
Painike input



7 20 Stations are being searched

20 zenders worden automatisch gezocht en opgeslagen
20 Stationen werden automatisch gesucht und gespeichert
20 les chaînes sont recherchées et mémorisées automatiquement
20 estaciones serán exploradas y almacenadas automáticamente
Automatisk programmering af radiostationer
Laitte hakee ja tallentaa automaattisesti 20 asemaa

