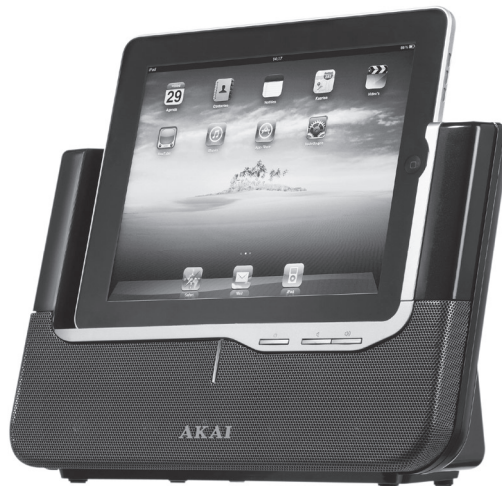


AKAI

iPod/iPhone/iPad Speaker

ASB81



User manual

Gebruiksaanwijzing

Manuel de l'utilisateur

Manual de instrucciones

Gebrauchsanleitung

Οδηγίες χρήσεως

Brugsanvisning

GB 2

NL 16

FR 30

ES 44

DE 58

EL 73

DA 87

Table of contents

1.	Safety	3
	1.1 Intended use	3
	1.2 Labels in this manual	3
	1.3 General safety instructions	3
2.	Preparations for use	4
	2.1 Unpacking	4
	2.2 Package contents	4
3.	Installation	4
	3.1 Connecting random equipment	6
	3.2 Connecting to the mains	7
	3.3 Remote control	8
4.	Functions	9
	4.1 iPod Music System	9
	4.2 Remote control	10
5.	Operation	10
	5.1 General functions	10
	5.2 iPod/iPhone/iPad functions	11
6.	Cleaning and maintenance	13
7.	Troubleshooting	13
8.	Technical data	14
9.	Disposal of used electrical and electronic equipment	15

Copyright notice

Design and specifications are subject to change without notice.

1. Safety

1.1 Intended use

The iPod Music System functions as a docking station to play music from an iPod/iPhone/iPad. Read the manual carefully before the first use.

1.2 Labels in this manual



WARNING

A warning means that injury or death is possible if the instructions are not obeyed.



CAUTION

A caution means that damage to the equipment is possible.



A note gives additional information, e.g. for a procedure.

1.3 General safety instructions



WARNING

Do not put force on the appliance. The appliance can fall and can cause serious injury.



CAUTION

Do not spill any liquid on the appliance.



WARNING

Do not insert any objects in the ventilation holes.



CAUTION

Do not block the ventilation holes.



This appliance is double insulated; therefore no earth wire is required. Always check that the mains voltage corresponds to the voltage on the rating plate. Never attempt to replace the adaptor plug with a regular mains plug.

2. Preparations for use

2.1 Unpacking

- Unpack the appliance carefully.
- Check the package contents as described below. If any item is missing, please contact your reseller.
- Remove the labels from the front panel carefully if present.



We recommend that you retain the original carton and packing materials in case it ever becomes necessary to return your product for service. This is the only way to safely protect the product against damage in transit. If you do dispose of the carton and the packing materials, please remember to recycle with due care to the environment.

2.2 Package contents

The following items are included in the received package:

- 1 iPod Music System
- 1 Remote control
- 1 Battery cell (CR2032)
- 1 AC/DC adaptor + cable
- 1 Operator manual



If any item is missing, please contact your reseller.

3. Installation

- Put the appliance on a horizontal flat surface.
- Connect the random equipment to the appliance.
Read the paragraph "Connecting random equipment".
- Connect the appliance to the mains.
Read the paragraph "Connecting to the mains".
- Install the batteries in the remote control.
Read the paragraph "Remote control".

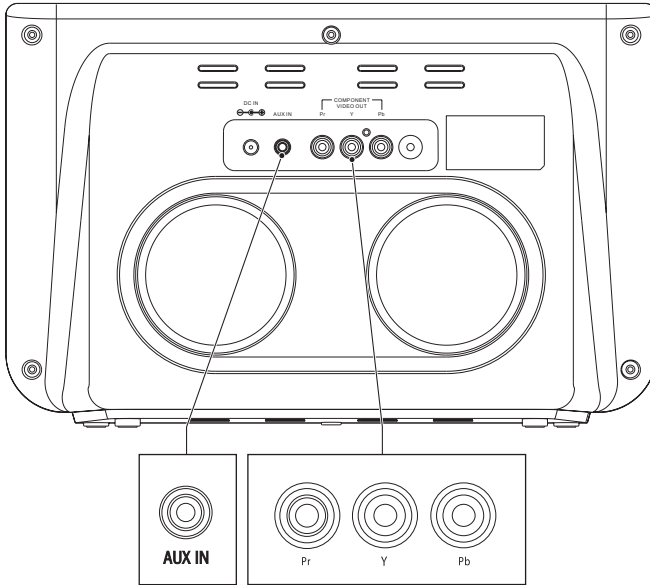
**CAUTION**

- Do not put the appliance near a heat source.
- Do not expose the appliance to direct sunlight.



This appliance is equipped with rubber feet to prevent it from moving. The feet are made from non-migrating material specially formulated to avoid leaving any marks or stains on furniture. However, certain types of furniture polishes, wood preservatives or cleaning sprays cause the rubber to soften and leave marks or a residue on the furniture, and potentially risk the surface to become damaged. To prevent damage to wooden surfaces, we recommend that you apply self-adhesive pads to the bottom of the rubber feet before installation.

3.1 Connecting random equipment



Audio connections (input)

These connections allow you to receive audio signal from a connected CD/DVD player or amplifier.

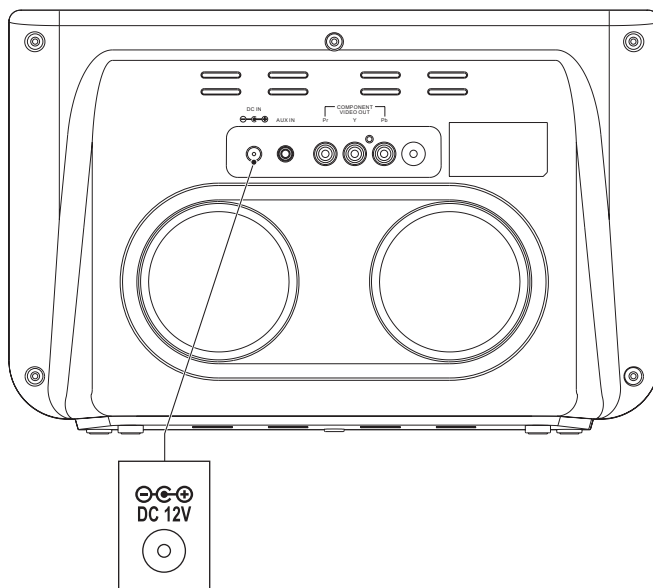
- Insert a suitable cable into the AUX IN connection.

Video connections

The video connections allow you to send a video signal (still images or movies) to a connected TV.

- Connect a suitable cable to the Pr/Y/Pb channels of the COMPONENT VIDEO OUT connection.

3.2 Connecting to the mains

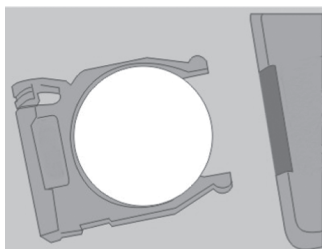
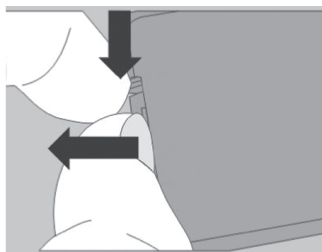


- Connect the adaptor plug on the adaptor cable to the DC IN connection.
- Connect the mains plug to a wall socket.

3.3 Remote control

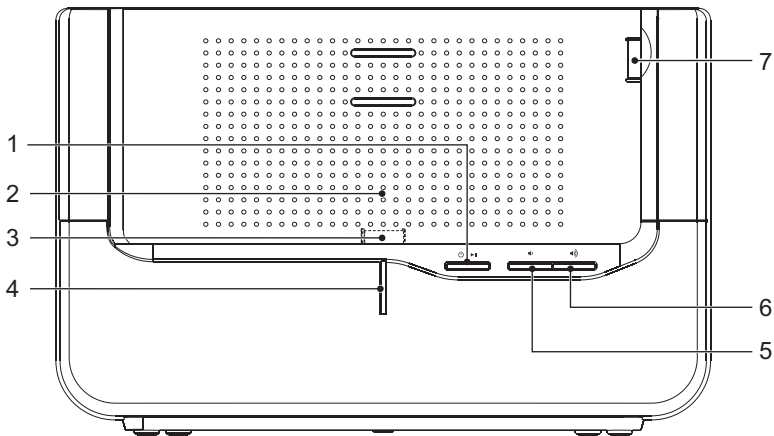
Installing the battery

- Press the catch and at the same time pull out the battery tray.
- Insert 1 lithium battery, type CR2032 3 V battery with the stamped (+) mark facing upward.
- Insert the battery tray into the remote control.



4. Functions

4.1 iPod Music System



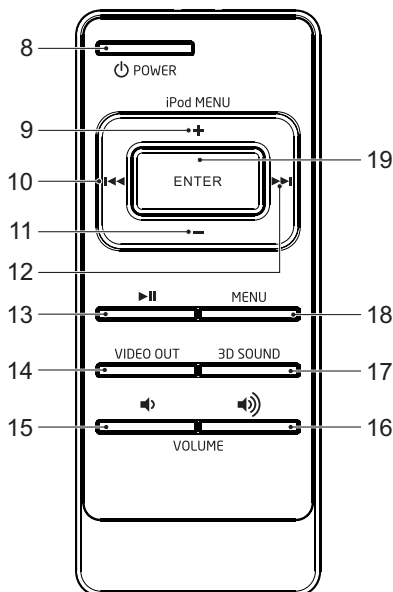
- 1 Power/Standby button
- 2 Docking station
- 3 Dock connector (for vertical docking)
- 4 LED indicator lamp
- 5 VOLUME - button
- 6 VOLUME + button
- 7 Dock connector (for horizontal docking)

4.2 Remote control

- 8 POWER button
- 9 + button
- 10 PREV button
- 11 - button
- 12 NEXT button
- 13 PLAY/PAUSE button
- 14 VIDEO OUT button
- 15 VOLUME - button
- 16 VOLUME + button
- 17 3D SOUND button
- 18 MENU button
- 19 ENTER button



The +, -, PREV and NEXT buttons function as arrow buttons for navigation in the iPod menus.



5. Operation

All functions of the appliance are accessible using the remote control. All instructions refer to operation with the remote control, unless indicated otherwise.

5.1 General functions

- To switch on the appliance, press the POWER button (8). To switch off the appliance, press the POWER button (8) again.
- To adjust the volume, press the VOLUME + button (6) or the VOLUME - button (5).
- To create a virtual surround sound, press the 3D SOUND button (17).

Using the AUX IN playback function



The AUX IN connection does not work if a unit is installed in the docking station. In order to facilitate playback from random equipment, the unit must be removed from the docking station.

5.2 iPod/iPhone/iPad functions

The appliance is compatible with most models of iPod, iPhone and iPad. For a complete overview of compatible units, refer to the table below.

Installing and removing a unit

iPad models can be installed in both vertical and horizontal position. iPod and iPhone models can be installed in vertical position only.

- To install a unit: Place the unit in the docking station (2).
 - For vertical docking, the unit must be connected to dock connector (3).
 - For horizontal docking, the unit must be connected to dock connector (7).
- To remove a unit: Pull the unit gently out of the docking station.



- When the unit is installed, it will go into standby mode and then switch off.
- Whilst the unit is docked in the system, its battery is charged automatically. When the battery is fully charged, the charging process is completed.

Unit compatibility

Model	Memory size
iPod mini	4/8 GB
iPod 4G	20/40 GB
iPod 4G (color display)	20/30/40/60 GB
iPod 5G	30/60/80 GB
iPod nano	2/4 GB
iPod 2G Nano	2/4/8 GB
iPod 3G Nano	4/8 GB
iPod 4G Nano	8/16 GB
iPod 5G Nano	8/16 GB
iPod 6G Nano	8/16 GB

iPod classic	80/160 GB
iPod classic 2G	120 GB
iPod touch	8/16/32 GB
iPod touch 2G	8/16/32 GB
iPod touch 4G	8/32/64 GB
iPhone	4/8/16 GB
iPhone 3G	8/16 GB
iPhone 3G S	8/16/32 GB
iPhone 4	16/32 GB
iPad	16/32/64 GB

Audio playback



In order to operate the following functions, the unit must be unlocked.

- Switch on the appliance.
 - To start playback, press the PLAY/PAUSE button (13) once.
- During playback, the following functions are available:
- To select a track, press the PREV button (10) or the NEXT button (12) until the desired track is set.
 - To forward or rewind the track, press and hold the PREV button (10) or the NEXT button (12).
 - To pause playback, press the PLAY/PAUSE button (13) once; to resume playback, press the button again.

Video playback



This function only works if the unit is installed in the vertical position. This function does not work if the unit is installed in the horizontal position.

- Press the VIDEO OUT button (14), then press the ENTER button (19).
- During playback, the following functions are available:
- To select a track, press the PREV button (10) or the NEXT button (12) until the desired track is set.
 - To forward or rewind the track, press and hold the PREV button (10) or the NEXT button (12).
 - To pause playback, press the PLAY/PAUSE button (13) once; to resume playback, press the button again.

Menu operation

In order to operate the following functions, the unit has to be unlocked.

- To select a playlist, press the MENU button (18).
- To enter the menu, press the MENU button (18).
- To enter and navigate through the menu:
 - Press the + button (9) or the - button (11) to select a submenu.
 - Press the ENTER button (19) to select a setting.
 - To return to the main menu, press the MENU button (18).

6. Cleaning and maintenance



WARNING

Before performing any cleaning or maintenance, switch off and unplug the appliance.

- Clean the outside of the appliance with a soft cloth. When the appliance is very dirty, dampen the cloth slightly with water and a neutral solution.

7. Troubleshooting

Trouble	Action
No sound or incomplete audio	Check if the correct source is selected. Check volume or mute setting. Check if the random equipment are switched on and set correctly. Check cables for connection problems.
No power	Check if the power cord has been properly connected to the power outlet.
The operation keys do not work.	Internal error. Reset the appliance.

iPod

Trouble	Action
iPod volume control does not increase audio volume	iPod volume control only controls the volume output to the headphone jack. Set the unit volume control when the iPod is docked on the unit.

AUX

Trouble	Action
No sound on the unit system	Input source is low. Increase the volume level on the audio source device.
No picture	Check if the TV is switched on and set to the correct A/V input. Check cables for connection problems. Check cables for damage.

8. Technical data

Parameter	Value
Voltage	10 V _{DC}
Input voltage	100-240 V _{AC} ~ 50/60 Hz
Power consumption	30 W
Max power output	2 x 10 W
Dimensions (W x H x D)	310 x 200 x 121 mm
Weight	1.65 kg

Remote control

Parameter	Value
Power consumption	3 V
Battery size	CR2032

9. Disposal of used electrical and electronic equipment



The meaning of the symbol on the material, its accessory or packaging indicates that this product shall not be treated as household waste. Please, dispose of this equipment at your applicable collection point for the recycling of electrical and electronic equipments waste. In the European Union and Other European countries which there are separate collection systems for used electrical and electronic product. By ensuring the correct disposal of this product, you will help prevent potentially hazardous to the environment and to human health, which could otherwise be caused by unsuitable waste handling of this product. The recycling of materials will help conserve natural resources. Please do not therefore dispose of your old electrical and electronic equipment with your household waste.

For more detailed information about recycling of this product, please contact your local city office, your household waste disposal service or the shop where you purchased the product.

For more information and warranty conditions, please visit: www.akai.eu