

# AKAI

## Soundbox with iPod docking

ASB20I



User manual

Gebruiksaanwijzing

Manuel de l'utilisateur

Manual de instrucciones

Gebrauchsanleitung

Οδηγίες χρήσεως

Brugsanvisning

GB 2

NL 19

FR 37

ES 55

DE 72

EL 90

DA 108

## Table of contents

<b>1.</b>	<b>Safety</b> .....	<b>3</b>
	1.1 Intended use .....	3
	1.2 Labels in this manual .....	3
	1.3 General safety instructions .....	3
<b>2.</b>	<b>Preparations for use</b> .....	<b>4</b>
	2.1 Unpacking .....	4
	2.2 Package contents .....	4
<b>3.</b>	<b>Installation</b> .....	<b>5</b>
	3.1 Connecting to the mains .....	6
	3.2 Remote control.....	6
	3.3 Battery power.....	7
<b>4.</b>	<b>Functions</b> .....	<b>8</b>
	4.1 iPod Music System .....	8
<b>5.</b>	<b>Operation</b> .....	<b>10</b>
	5.1 Quick start.....	10
	5.2 iPod functions .....	11
	5.3 Radio functions .....	13
	5.4 Clock functions.....	13
	5.5 Setting the SLEEP function.....	14
	5.6 Alarm function .....	15
	5.7 Resetting the appliance .....	15
<b>6.</b>	<b>Cleaning and maintenance</b> .....	<b>16</b>
<b>7.</b>	<b>Troubleshooting</b> .....	<b>16</b>
<b>8.</b>	<b>Technical data</b> .....	<b>17</b>
<b>9.</b>	<b>Disposal of used electrical and electronic equipment</b> .....	<b>18</b>

## Copyright notice

Design and specifications are subject to change without notice.

# 1. Safety

## 1.1 Intended use

The iPod Music System functions as a docking station to play music from an iPod. The appliance also plays music from radio. The clock function includes an alarm and sleep program. Read the manual carefully before the first use.

## 1.2 Labels in this manual

**WARNING**

A warning means that injury or death is possible if the instructions are not obeyed.

**CAUTION**

A caution means that damage to the equipment is possible.



A note gives additional information, e.g. for a procedure.

## 1.3 General safety instructions

**WARNING**

Do not put force on the appliance. The appliance can fall and can cause serious injury.

**CAUTION**

Do not spill any liquid on the appliance.

**WARNING**

Do not insert any objects in the ventilation holes.

**CAUTION**

Do not block the ventilation holes.



This appliance is double insulated; therefore no earth wire is required. Always check that the mains voltage corresponds to the voltage on the rating plate. Never attempt to replace the adaptor plug with a regular mains plug.

## 2. Preparations for use

### 2.1 Unpacking

- Unpack the appliance carefully.
- Check the package contents as described below. If any item is missing, please contact your reseller.
- Remove the labels from the front panel carefully if present.



We recommend that you retain the original carton and packing materials in case it ever becomes necessary to return your product for service. This is the only way to safely protect the product against damage in transit. If you do dispose of the carton and the packing materials, please remember to recycle with due care to the environment.

### 2.2 Package contents

The following items are included in the received package:

- 1 iPod Music System
- 1 Remote control
- 1 Battery cell (CR2025)
- 5 iPod dock adaptors
- 1 AC/DC adaptor + cable
- 1 Operator manual



If any item is missing, please contact your reseller.

### 3. Installation

- Put the appliance on a horizontal flat surface.
- Connect the appliance to the mains. Read the paragraph "Connecting to the mains".
- Install the batteries in the remote control. Read the paragraph "Remote control".



#### CAUTION

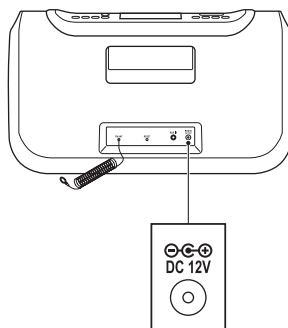
- Do not put the appliance near a heat source.
- Do not expose the appliance to direct sunlight.



This appliance is equipped with rubber feet to prevent it from moving. The feet are made from non-migrating material specially formulated to avoid leaving any marks or stains on furniture. However, certain types of furniture polishes, wood preservatives or cleaning sprays cause the rubber to soften and leave marks or a residue on the furniture, and potentially risk the surface to become damaged. To prevent damage to wooden surfaces, we recommend that you apply self-adhesive pads to the bottom of the rubber feet before installation.

## 3.1 Connecting to the mains

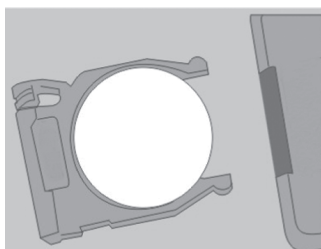
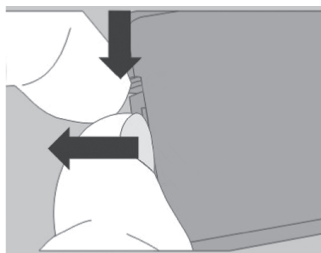
- Connect the adaptor plug on the adaptor cable to the DC12V connection.
- Connect the mains plug to a wall socket.



## 3.2 Remote control

### Installing the battery

- Press the catch and at the same time pull out the battery tray.
- Insert 1 lithium battery, type CR2025 3V battery with the stamped (+) mark facing upward.
- Insert the battery tray into the remote control.



### 3.3 Battery power

The appliance can also be operated on battery power. For this purpose, the appliance uses eight batteries (C).



- Batteries are not included with this appliance.
- Batteries are not necessary for normal operation.

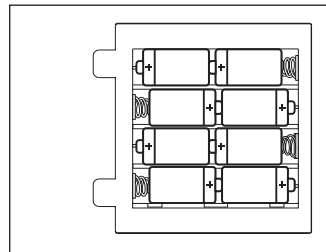
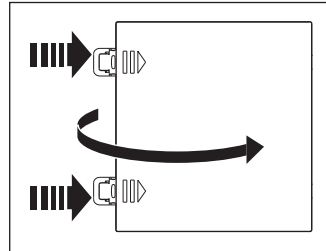
#### Install batteries

- Remove the battery cover.
- Insert the batteries matching the (+) and (-) polarity markings.
- Re-install the battery cover.



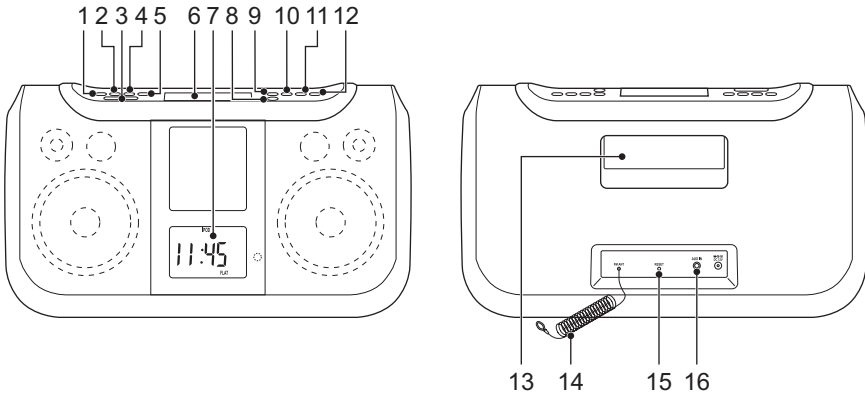
#### CAUTION

Incorrect installation can cause battery leakage and corrosion which will damage the appliance. Corrosion, oxidation, battery leakage and any other gradually acidic defect of this nature will invalidate the guarantee.



# 4. Functions

## 4.1 iPod Music System

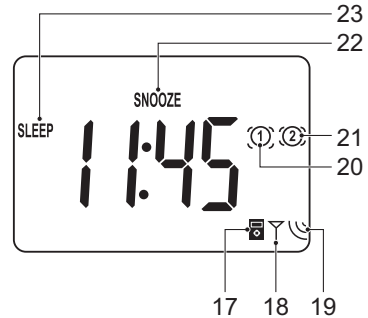


- 1 Power/Standby button
- 2 FUNCTION button
- 3 SNOOZE button
- 4 VOL - button
- 5 VOL + button
- 6 Docking station
- 7 Display
- 8 OPEN/CLOSE button
- 9 PLAY/PAUSE button
- 10 STOP button
- 11 PREV/REV/TUNE - button
- 12 NEXT/FWD/TUNE + button
- 13 Carrying handle
- 14 FM antenna
- 15 RESET button
- 16 Line in jack



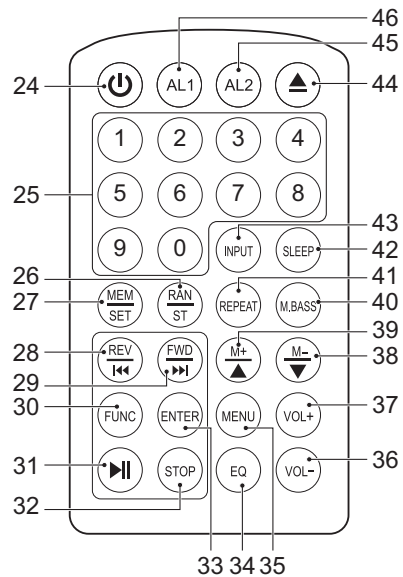
## Display

- 17 Alarm mode indicator: iPod
- 18 Alarm mode indicator: Radio
- 19 Alarm mode indicator: Tone
- 20 ALARM1 indicator
- 21 ALARM2 indicator
- 22 SNOOZE indicator
- 23 SLEEP indicator



## Remote control

- 24 Power on/Stand-by button
- 25 Digit buttons
- 26 RAN/ST button
- 27 MEM/SET button
- 28 PREV/REV button
- 29 NEXT/FWD button
- 30 FUNC button
- 31 PLAY/PAUSE button
- 32 STOP button
- 33 ENTER button
- 34 Electronic Preset Equalizer button (EQ)
- 35 MENU button
- 36 VOLUME - button
- 37 VOLUME + button
- 38 M - button
- 39 M + button
- 40 M.BASS button
- 41 REPEAT button
- 42 SLEEP button
- 43 INPUT button
- 44 OPEN/CLOSE button
- 45 ALARM2 button
- 46 ALARM1 button



## 5. Operation

All functions of the appliance are accessible using the remote control. All instructions refer to operation with the remote control, unless indicated otherwise.

### 5.1 Quick start

#### General functions

- To switch on the appliance, press the Power/Standby button (24). To switch off the appliance, press the Power/Standby button (24) again.
- To select the source mode (iPod/Radio/AUX), press the FUNC button (30).
- To adjust the volume, press the VOL + button (37) or the VOL - button (36).
- To enable the sound mode (FLAT/STUDIO/ARENA/MONITOR/CLUB), press the EQ button (34). To disable the sound mode, select FLAT.
- To enable the enhanced bass, press the M.BASS button (40). Press the button again to disable the enhanced bass.
- To connect an external audio device, insert the cable plug in the AUX receptacle (16).

#### iPod functions

- Select the matching dock adaptor for your iPod. Insert the dock adaptor in the docking station (7). Place the iPod on the dock adaptor.
- Switch on the appliance. Select the iPod mode.
- To start playback, press the PLAY/PAUSE button (31) once.
- For extended instructions, read the paragraph "iPod functions" further on in this manual.

#### Radio functions

- Switch on the appliance. Select the tuner mode.
- To tune to the station of your choice, press the TUNE + button (29) or the TUNE - button (28) repeatedly until the frequency is found.
- For extended instructions, read the paragraph "Radio functions" further on in this manual.

#### Clock functions

- Read the paragraph "Clock functions" further on in this manual.

## 5.2 iPod functions

### Installing and removing an iPod

- To install an iPod:
  - Press the OPEN/CLOSE button (44) to open and raise the dock.
  - Wait for the docking station to raise to its highest position.
  - Choose the correct dock adapter. Refer to the table below.
  - Insert the dock adaptor into the dock.
  - Insert the iPod into the dock adaptor.
  - Press the OPEN/CLOSE button (44) to lower and close the dock.
- To remove an iPod:
  - Press the STOP button (32).
  - Press the OPEN/CLOSE button (44) to open and raise the dock.
  - Wait for the docking station to raise to its highest position.
  - Pull the iPod gently out of the dock adaptor.
  - To remove dock adaptor, pull the dock adaptor gently out of the appliance.
  - Press the OPEN/CLOSE button (44) to lower and close the dock.



#### CAUTION

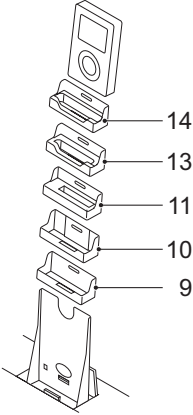
When connecting an iPod, ensure that the correct dock adaptor is placed.



- When an iPod is installed, it will go into standby mode and then switch off.
- Whilst the iPod is docked in the system, its battery is charged automatically. When the battery is fully charged, the charging process is completed.

## Dock adaptor compatibility

Model	Memory size	Adaptor type
iPod Touch	8 GB	14
	10 GB	14
iPod 3G Nano	4 GB	13
	8 GB	13
iPod classic	80 GB	9
	160 GB	10
iPod 2G Nano	2 GB	11
	4 GB	11
	8 GB	11
iPod 5G (with video)	30 GB	9
	60 GB	10
	80 GB	10
iPod nano	2 GB	11
	4 GB	11



## Audio playback

During playback, the following functions are available:

- To select a track, press the PREV button (28) or the NEXT button (29) until the desired track is set.
- To forward or rewind the track, press and hold the FWD button (29) or the REV button (28).
- To pause playback, press the PLAY/PAUSE button (31) once; to resume playback, press the button again.
- To stop playback, press the STOP button (32).

In order to operate the following functions, the iPod has to be unlocked.

- To enter the iPod menu, press the MENU button (35).
- To repeat one or all tracks:
  - Press the REPEAT button (41) once to repeat the current track.
  - Press the button twice to repeat all tracks.
  - Press the button three times to cancel the function.
- Press the RANDOM button (26) to play all tracks in random order. Press the button once again to cancel the function.



In order to operate the REPEAT or RANDOM function, the iPod has to support these functions.

## 5.3 Radio functions

- To select a preset radio station, press the INPUT button (43), then enter the number using the digit buttons (25). Alternatively, use the M +/- buttons (38/39) to zap through the list.
- To search for a specific frequency, press the PREV button (28) or the NEXT button (29) repeatedly until the desired frequency is set.
- To search automatically, press and hold the PREV button (28) or the NEXT button (29). The appliance searches for the next available station.
- To improve the reception of the FM frequency, press the ST button (26).



To improve the reception of the FM frequency, extend the aerial antenna.

### Programming radio stations

Per radio band (FM), 12 radio stations can be preset.

- Press the PREV button (28) or the NEXT button (29) repeatedly until the desired frequency is set.
- Press the MEM/SET button (27).
- Press the M - button (38) or the M + button (39) to select the preset memory number.
- Press the MEM/SET button (27) to confirm the selection.

## 5.4 Clock functions

With the clock function, the following parameters can be set:

- current time
- alarm time

### Setting the current time



To set the time, the appliance must be switched OFF.

- Press and hold the MEM/SET button (27). The hour digits start flashing.
- To set the correct hour, press the PREV button (28) or the NEXT button (29).
- To confirm the setting, press the MEM/SET button (27). The minute digits start flashing.

- To set the correct minutes, press the PREV button (28) or the NEXT button (29).
- To confirm the setting, press the MEM/SET button (27).

## Setting the alarm time

Two time slots are available (ALARM1 and ALARM2).

To set ALARM1:

- Press and hold the AL1 button (46). The alarm icon (20) appears on the display. The hour digits start flashing.
- To set the correct hour, press the PREV button (28) or the NEXT button (29).
- To confirm the setting, press the MEM/SET button (27). The minute digits start flashing.
- To set the correct minutes, press the PREV button (28) or the NEXT button (29).
- To confirm the setting, press the MEM/SET button (27).

To set ALARM2:

- Press and hold the AL2 button (45). The alarm icon (21) appears on the display. The hour digits start flashing.
- To set the correct hour, press the PREV button (28) or the NEXT button (29).
- To confirm the setting, press the MEM/SET button (27). The minute digits start flashing.
- To set the correct minutes, press the PREV button (28) or the NEXT button (29).
- To confirm the setting, press the MEM/SET button (27).



During a power failure, or when unplugging the appliance, the time settings are lost, unless backup batteries are installed.

## 5.5 Setting the SLEEP function

- Select the desired radio station.
- Press the SLEEP button (42). The sleep time (90 min) flashes on the display.
- Press the button repeatedly until the desired setting is found (90, 80, 70 .. 10 min). The SLEEP indicator (23) is ON.

The appliance stops playing after the chosen time has elapsed.

- To cancel the SLEEP function, press the SLEEP button (42).

## 5.6 Alarm function

To activate ALARM1:

- To select the tone alarm mode, press the AL1 button (46) once. The alarm indicator (20) and the corresponding alarm mode indicator (19) are ON.
- To select the radio alarm mode, press the AL1 button (46) once again. The alarm indicator (20) and the corresponding alarm mode indicator (18) are ON.
- To select the iPod alarm mode, press the AL1 button (46) once again. The alarm indicator (20) and the corresponding alarm mode indicator (17) are ON.
- To cancel the alarm, press the AL1 button (46) once again.

To activate ALARM2:

- To select the tone alarm mode, press the AL2 button (45) once. The alarm indicator (21) and the corresponding alarm mode indicator (19) are ON.
- To select the radio alarm mode, press the AL2 button (45) once again. The alarm indicator (21) and the corresponding alarm mode indicator (18) are ON.
- To select the iPod alarm mode, press the AL2 button (45) once again. The alarm indicator (21) and the corresponding alarm mode indicator (17) are ON.
- To cancel the alarm, press the AL2 button (45) once again.

### Snooze alarm

- To snooze the alarm, press the SNOOZE button (3) once. The SNOOZE indicator (22) is ON, and the ALARM indicator flashes. The alarm sounds again after the snooze time has elapsed.
- To stop the alarm, press the Power/Standby button (24). The alarm is automatically set for the next day.

## 5.7 Resetting the appliance

- To restore the default settings of the appliance, press the RESET button (15) using a pointed object.

## 6. Cleaning and maintenance



### WARNING

Before performing any cleaning or maintenance, switch off and unplug the appliance.

- Clean the outside of the appliance with a soft cloth. When the appliance is very dirty, dampen the cloth slightly with water and a neutral solution.

## 7. Troubleshooting

Trouble	Action
No sound or incomplete audio	Check if the correct source is selected. Check volume or mute setting. Check if the random equipment are switched on and set correctly. Check cables for connection problems.
No power	Check if the power cord has been properly connected to the power outlet.
The operation keys do not work.	Internal error. Reset the appliance.

### Radio

Trouble	Action
Noise or sound distorted on FM broadcasts.	Station is not tuned properly. Adjust tuning control. Wire aerial is not positioned correctly. Extend the aerial.
FM stereo indicator does not light.	Selected station broadcasts in mono Extend the aerial. Station signal is too weak. Try other strong stations.

### iPod

Trouble	Action
iPod volume control does not increase audio volume	iPod volume control only controls the volume output to the headphone jack. Set the unit volume control when the iPod is docked on the unit.
No response to REPEAT or RANDOM function.	iPod does not support these functions.



## AUX

Trouble	Action
No sound on the unit system.	Input source is low. Increase the volume level on the audio source device.

## 8. Technical data

Parameter	Value
Voltage	12 V <sub>DC</sub>
Input voltage	230 V <sub>AC</sub> ~ 50 Hz
Power consumption	23 W
Max power output	2 x 22,4 W (2 x 8 W RMS)
Radio bands	FM
Dimensions (W x H x D)	365 x 200 x 135 mm
Weight	2,52 kg

### Frequency range

Parameter	Value
FM radio	85,7 - 108 mHz

### Battery power

Parameter	Value
Power consumption	8 x 1,5 V
Battery size	C

### Remote control

Parameter	Value
Power consumption	3 V
Battery size	CR2025

## 9. Disposal of used electrical and electronic equipment



The meaning of the symbol on the material, its accessory or packaging indicates that this product shall not be treated as household waste. Please, dispose of this equipment at your applicable collection point for the recycling of electrical and electronic equipments waste. In the European Union and Other European countries which there are separate collection systems for used electrical and electronic product. By ensuring the correct disposal of this product, you will help prevent potentially hazardous to the environment and to human health, which could otherwise be caused by unsuitable waste handling of this product. The recycling of materials will help conserve natural resources. Please do not therefore dispose of your old electrical and electronic equipment with your household waste.

For more detailed information about recycling of this product, please contact your local city office, your household waste disposal service or the shop where you purchased the product.

For more information and warranty conditions, please visit: [www.akai.eu](http://www.akai.eu)