

AKAI

Digital Photo Album

ABF240



User manual

Gebruiksaanwijzing

Manuel de l'utilisateur

Manual de instrucciones

Gebrauchsanleitung

Οδηγίες χρήσεως

GB 2

NL 14

FR 26

ES 38

DE 50

EL 62

Table of contents

1.	Safety	3
1.1	Intended use	3
1.2	Labels in this manual	3
1.3	General safety instructions	3
2.	Preparations for use	4
2.1	Unpacking	4
2.2	Package contents	4
3.	Functions	5
4.	Operation	5
4.1	Connection to computer	5
4.2	General functions	6
4.3	General setup menu operation	7
4.4	Uploading files	9
4.5	Reset the appliance	11
5.	Troubleshooting	12
6.	Technical data	12
7.	Disposal of used electrical and electronic equipment	13

Copyright notice

Design and specifications are subject to change without notice.

1. Safety

1.1 Intended use

The digital photo album displays photos. The clock function includes an alarm and calendar function. Read the manual carefully before the first use.

1.2 Labels in this manual

**WARNING**

A warning means that injury or death is possible if the instructions are not obeyed.

**CAUTION**

A caution means that damage to the equipment is possible.



A note gives additional information, e.g. for a procedure.

1.3 General safety instructions

**WARNING**

Do not put force on the appliance. It will damage the appliance.

**CAUTION**

Do not spill any liquid on the appliance.

2. Preparations for use

2.1 Unpacking

- Unpack the appliance carefully.
- Check the contents as described below. If any item is missing, please contact your reseller.
- Remove the labels from the front panel carefully if present.



We recommend that you retain the original carton and packing materials in case it ever becomes necessary to return your product for service. This is the only way to safely protect the product against damage in transit. If you do dispose of the carton and the packing materials, please remember to recycle with due care to the environment.

2.2 Package contents

The following items are included in the received package:

- 1 Digital photo album
- 1 USB cable
- 1 Operator manual
- If any item is missing, please contact your reseller.



CAUTION

Do not put the appliance near a heat source. This can cause damage to the equipment.

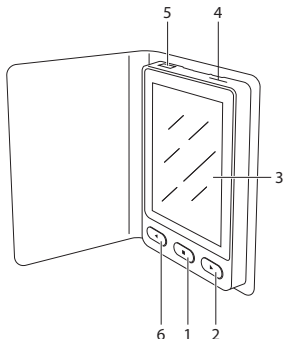


CAUTION

Do not expose the appliance to direct sunlight. This can cause damage to the equipment.

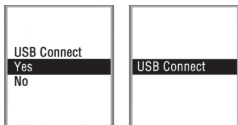
3. Functions

- 1 POWER ON/MENU button
- 2 NEXT button
- 3 Display
- 4 Reset pin
- 5 USB slot
- 6 PREV button



4. Operation

4.1 Connection to computer



- Connect one end of the USB cable to the USB slot (5).
- Connect the other end of the USB cable to the computer.

Battery charging

The appliance starts charging during connection with the computer. The charge time before the first use or after it has not been used for a long time is approximately 5 hours. The average charge time during regular use is 3 hours.

For cordless use, this appliance relies on a rechargeable battery.



When the battery is almost empty, the screen displays the message: “Low Power”.

4.2 General functions



- To switch on the appliance, press the POWER ON/MENU button (1). To switch to stand-by mode, press and hold the POWER ON/MENU button.
- To select an item in the main menu, press the PREV button (6) or the NEXT button (2).
- To confirm the selection, press the POWER ON/MENU button (1).
- To return to the main menu, press the POWER ON/MENU button (1) again.
- To switch off the appliance, select “Off” in the main menu.

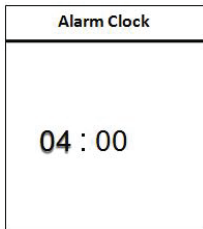


If the appliance does not contain any files, the screen displays the message: “No Photo”.

Complete the online connection

- Press the POWER ON/MENU button (1) to enter the USB connect menu.
- To complete the connection to the computer, select “Yes”.

4.3 General setup menu operation



- "Display Clock": to set the time display. To display the time on the bottom right side, press the PREV button (6) or the NEXT button (2) for 2 seconds. To cancel the time display completely, press the PREV button (6) or the NEXT button (2) for two seconds.
- Calendar: to display the month and year.
- Analogue Clock: to display the clock in analog mode.
- Set Clock: to set the clock, the date and the day.

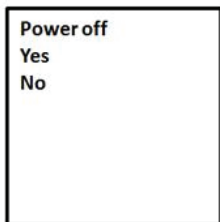
- Alarm Clock: to set the alarm.
- Cancel: to return to the main menu.



- Slide Show: to set the interval between the slides (0-15 sec).



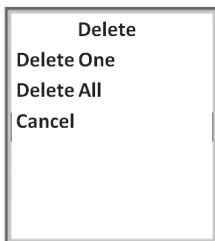
- **Auto Off:** to set time period in which the appliance is switched on. The appliance switches off automatically after the preset time (0-30 min).



- **Power off:** to switch off the appliance completely.



- **Backlight:** to set the Backlight brightness (0-21).



- **"Delete One":** to delete a picture. Select "Yes" or "No".
- **"Delete All":** to delete all the pictures. Select "Yes" or "No".
- **Cancel:** to return to the previous page in the menu.

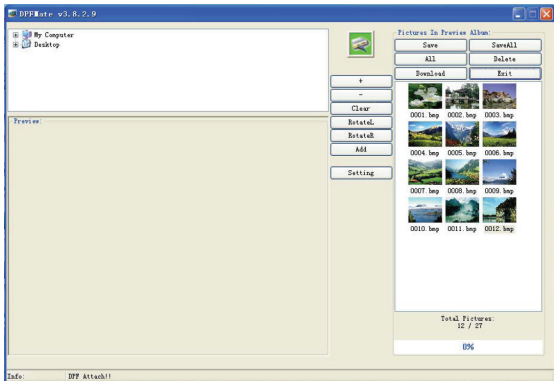


- Exit: to exit the menu.

4.4 Uploading files

- Connect the appliance to the computer as described in the section “Connection to computer”.
- Select “USB Connect”.
- Select “Yes” to complete the connection.

When the connection is completed, the computer shows the following window:



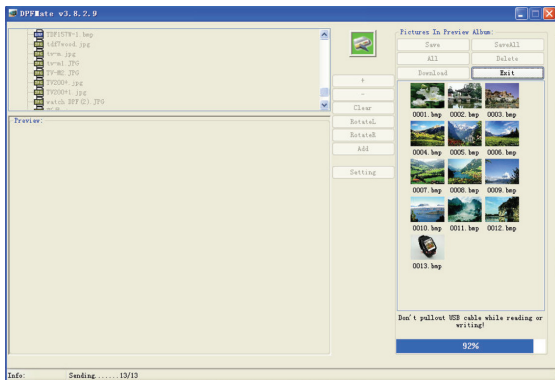


If the pictogram is green, the appliance is connected. If the pictogram is red, the appliance is not connected correctly.

Picture modification

Button	Explanation
+, -	Zoom in/out on the picture.
RotateL, RotateR	Rotate the picture left or right.
Clear	Set the correct picture size to fit the display. Press the button again to return to normal picture size.
Add	Add a picture to the preview album screen on the computer.
All	Select all the pictures in the preview album screen on the computer.
Delete	Delete the picture.
Save	Save selected picture to the computer.
SaveAll	Save all pictures to the computer.
->	Start the conversion process.
Down	Transfer the pictures from the preview album screen on the computer to the appliance.
Exit	Exit the program.

During the transfer of the pictures, the computer shows the following window:



Menu window settings

To change the settings of the menu window on the computer, refer to the table below.

Button	Explanation
Setting	Change the font color and background color.
Fontcolor	Select the font color.
Background	Select the background color.

4.5 Reset the appliance

- Pull out the Reset pin (4) from the top of the appliance.
- Insert the pin into the hole at the bottom back side of the appliance. Keep the pin inserted for three seconds.
- Pull the pin out of the reset hole.
- Insert the pin into the top of the appliance.

5. Troubleshooting

Trouble	Action
Appliance does not switch on	Recharge battery
Message "Cannot find dpf mate program" appears on screen	Access the program via "My Computer".
Appliance has a system crash	Recharge battery Reset the appliance

6. Technical data

Parameter	Value
Voltage	3,7 V
Supported media formats	JPG/BMP
Battery run time	2,5 h
Screen size	2,4"
Resolution	320 x 240 pixels
Internal memory	16 MB
Weight	62 g


7. Disposal of used electrical and electronic equipment



The meaning of the symbol on the material, its accessory or packaging indicates that this product shall not be treated as household waste. Please, dispose of this equipment at your applicable collection point for the recycling of electrical and electronic equipments waste. In the European Union and Other European countries which there are separate collection systems for used electrical and electronic product. By ensuring the correct disposal of this product, you will help prevent potentially hazardous to the environment and to human health, which could otherwise be caused by unsuitable waste handling of this product. The recycling of materials will help conserve natural resources. Please do not therefore dispose of your old electrical and electronic equipment with your household waste.

For more detailed information about recycling of this product, please contact your local city office, your household waste disposal service or the shop where you purchased the product.

For more information and warranty conditions, please visit: www.akai.eu



Heeft u na het lezen van deze handleiding nog vragen?
Neemt u dan contact op met AKAI Benelux via:

0900-355333

Avez-vous des questions après avoir lu ce manuel?
Contactez AKAI Benelux par téléphone au :

070-355505

www.akai.eu